

Historic, Archive Document

Do not assume content reflects current scientific knowledge, policies, or practices.

62.23

HILL'S EVERGREEN BOOK

1913



NORWAY SPRUCE
WINDBREAK

WHITE PINE

DOUGLAS
FIR

BLUE SPRUCE

AMERICAN ARBOR
VITAE HEDGE

THE D. HILL NURSERY CO. Inc.
 EVERGREEN SPECIALISTS
 DUNDEE, ILLINOIS

H

Our Guarantee

We guarantee that all goods purchased from us will reach you safely and in good condition; be found true to name and prove entirely satisfactory or we cheerfully refund money paid.

THE D. HILL NURSERY CO., Inc.
D. Hill, Pres.

Elgin National Bank

CAPITAL \$100,000.00

D. H. HILL, President
ROBERT SECURITY, Vice President
E. F. SPANGLER, Cashier

ELGIN, ILL.

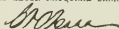
TO WHOM IT MAY CONCERN:

D. Hill, and successor, The D. Hill Nursery Co. Inc., of Dundee, Ill., have for many years been valued depositors and customers of this Bank.

They have at Dundee one of the largest evergreen nurseries in the world and the high quality of their goods has brought them a very large business.

They have the highest reputation for honesty and fair dealing and we cheerfully recommend them to anyone desiring goods in their line.

THE ELGIN NATIONAL BANK.



Cashier.



FRANK H. BESS, President
CHARLES H. SULLIVAN, Vice President
CHARLES C. WOLFF, Cashier

Dundee State Bank

DUNDEE, ILLINOIS

FOUNDED 1893

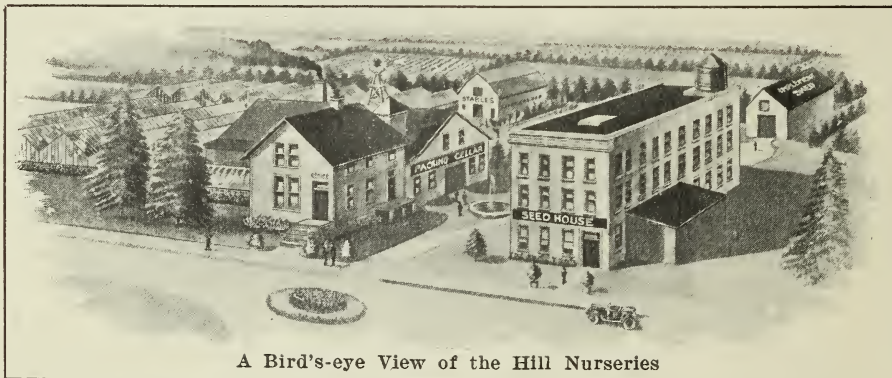
Dundee, Illinois.
October 10th, 1912

TO WHOM IT MAY CONCERN:

I am glad to recommend the D. Hill Nursery Co. Inc., to anyone desiring to purchase evergreens, etc. I have known Mr. Hill and his sons a great many years and they have the highest reputation for fair and square dealing.

By careful attention to the quality of their stock they have gradually built up an immense business and are making shipments to all parts of the world.

 President
Dundee State Bank.



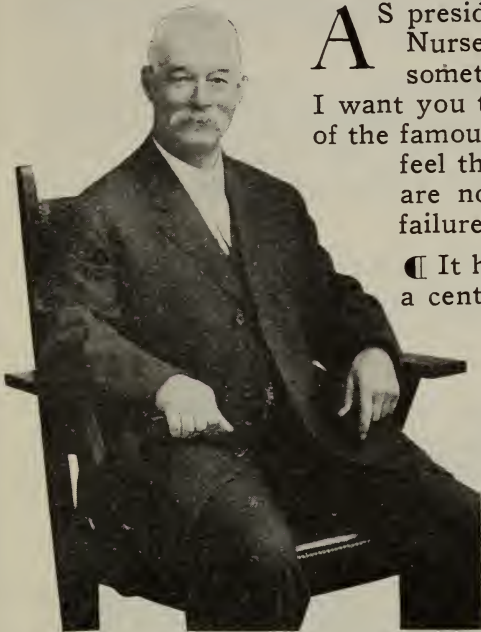
A Bird's-eye View of the Hill Nurseries

A Special Word. We invite your special attention to the fact that in this catalog all illustrations of trees and plants are made from actual photographs. In every case, therefore, our illustrations give an accurate idea of the appearance of the trees, shrubs and plants shown. You can depend upon the pictures and descriptions in Hill's catalogs, just as you can depend upon the quality of Hill's trees.

GENERAL INDEX

	Pages
Evergreens for ornamental lawn planting.....	8-26
Evergreens for windbreaks.....	26-38
Evergreens for hedges.....	38-40
Deciduous shade trees.....	40-44
Forest tree seedlings.....	44-46
Shrubs, vines, roses.....	46-50

Something About the Hill Nurseries



D. HILL, President.

AS president and manager of the D. Hill Nursery Co., Inc., I want to tell you something of our growth and success. I want you to fully appreciate the superiority of the famous Hill Evergreens. I want you to feel that in ordering my evergreens you are not taking the slightest chance of failure or dissatisfaction in growth.

¶ It has been 56 years—more than half a century—since the original Hill Nurseries were established. In 1855 a small nursery devoted exclusively to evergreens was started at Dundee, Illinois. At this time not much was known about growing evergreens from a scientific standpoint, and only a few acres and a small number of men were employed. In these early days we did not have the advantages of our modern experimental and testing

grounds to aid us in our work. We did, however, insist on quality. We made sure that every tree sent out was true to name, was symmetrical, strong, healthy and hardy.

¶ This policy has ever since been adhered to, and to our painstaking efforts in this direction is due the reputation Hill's Evergreens enjoy for certainty of growth and beauty. Everyone who has had any experience with our stock knows that HILL'S EVERGREENS GROW.

¶ So from a mere acre or two of evergreen trees the Hill Nurseries have expanded until at the present time our nurseries, greenhouses, seedling beds, testing grounds, etc., cover a space of more than four hundred and fifty acres. And let me say right here that there isn't a more ideal spot anywhere in the United States for the propagation of evergreens. We are located just far enough North to insure hardiness and just far enough South for good SUBSTANTIAL growth. I don't believe Nature could have provided a more fertile, soil-perfect country for growing evergreens than this famous Fox River Valley of which my nurseries comprise some of the finest acres.

¶ Four hundred and fifty acres of evergreens is not an everyday sight. It is the largest tract of land in the world devoted exclusively to raising evergreens—and on this tract there are more than fifty million evergreen trees.

Quantity Without Quality Will Not Build a Success

¶ I have told you something of the immense acreage we employ, now let me tell you something of the **QUALITY** of the Hill Evergreen.

¶ Hill Evergreens are grown right! There are different **QUALITIES** of Evergreens, just as there are different grades of calicoes, silk, etc. To produce Evergreens that will measure up to the standard of Hill quality requires the most painstaking care and attention.

¶ The **HILL** Evergreen is watched, cared for—**NURSED**, I might say—from the very minute it peeps through the soil until it is carefully packed and made ready for shipment. Trained experts constantly watch and guard its growth.

¶ When the seeds germinate and the seedling pushes its way through the ground, it is protected from the hot rays of the sun by placing light wooden slats across the top of the beds. These slats are adjusted from day to day as demanded by climatic conditions so that just the proper amount of air and sunlight will reach the seedlings. No weeds are allowed in the seed beds, so that every particle of nourishment in the soil goes into the growing trees.

**Seedling
Trees
Well
Protected**

¶ After two years of constant care and watchfulness the seedlings are transplanted into rows about two feet apart. Here they are under constant cultivation with hand and horse cultivators for another two years.

¶ At the end of the first year they are "root pruned." This process consists of cutting off the roots of the little trees a certain distance beneath the surface of the soil. Wherever one of the roots is cut the tree produces a mass of fibrous feeding roots which enable it to take up nourishment much more rapidly from the soil.

¶ At the end of another year the tree is taken up and transplanted.

¶ This process of root pruning one year and transplanting another year continues as long as the tree remains in our nursery.

¶ Root pruning and transplanting are the only known method of producing a tree that has masses of fibrous feeding roots, and without such roots a tree will not grow when sent to you. Any tree that is a weakling will not survive the various processes described above and will naturally be eliminated. This accounts for the high quality of Hill Evergreens. This is the secret of Hill Evergreens' certainty of growth.



¶ My years of experience have taught me that no evergreens can be shipped with any certainty that they will grow unless they have these fibrous feeding roots produced by the methods I have just described.

¶ Unless they have an abundance of these fibrous feeding roots they cannot readily absorb plant food from the soil. They either die of actual starvation or at best are weak, puny, unhealthy—a failure.

¶ If it were not for our methods of transplanting every small tree and giving it its fibrous roots, we would undoubtedly experience many growth failures such as other nurseries have. I am sorry



to say that many nurserymen either do not realize the importance of this or are unwilling to spend the money necessary for the same care and attention as we give our stock.

¶ Years ago we experimented and found the methods that would insure Evergreens that grow,—would eliminate all failures. We discovered the Hill scientific method of growing evergreens, and today no other means are employed on our place.



*Norway Spruce.
The Great Wind-
break Tree.

¶ Growing Evergreens, however, is only one end of our business.

Suppose I do grow the finest quality evergreens in the world and see to it personally that every tree is given the most expert care and attention, what will all this avail me if I do not see that the evergreen reaches you in perfect condition so that it will be sure to grow? Therefore the digging, handling and packing for shipment are vitally important.

Showing Mass of Fibrous
Roots Developed by Hill Sci-
entific Methods of Growing.

¶ I don't allow my men to dig up evergreens as though they were ridding a back yard of weeds. I won't allow a man to dig and



Digging

handle my evergreens unless he is thoroughly trained in that end of the business. He must be just as much of an expert as the man who LIVES with my evergreens and watches them.

¶ Let me tell you why I'm laying so much stress on this digging and handling. It is just as important that all these fine, fibrous, feeding roots are skillfully dug up uninjured as it

is for me to see that these small trees get a chance to GROW fine, fibrous, feeding roots.

¶ "Use your very utmost care and skill in digging up these Evergreens for shipment, and see to it that not a single 'artery' root is lost." That's what I tell my expert diggers—and they know I MEAN BUSINESS.

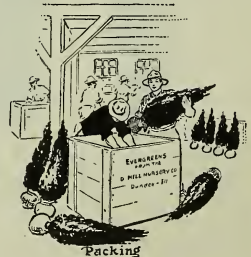
¶ Then these Evergreens, freshly dug, are taken immediately to packing cellars—away from exposure to wind and sun, and prepared for shipment. We do this IMMEDIATELY after digging up the trees, because exposing the roots to the wind and sun for any length of time almost invariably kills the trees.

¶ I don't allow my evergreens, after being dug up, to lay around on the ground half a day before packing them. No, indeed! That would be just as bad as not giving them the fibrous roots at all or in cutting them off when digging them up.

¶ It's care all the way through from beginning to end that is exercised. And no nursery in the world gives such care at every stage of the growing, digging, handling and packing as I do. None of them insist on the little extras such as I use to preserve life and strength.

¶ Hill Evergreens are packed in genuine peat moss. Why? Because moisture cannot be conserved in any other way—a fact acknowledged by every tree expert. Then the evergreens are put in a strong, properly ventilated box, placed in layers with a wooden cleat securely nailed between each layer. This method prevents the trees from shaking around; keeps the roots of each one safely secured in its peat moss bed; gives every tree plenty of pure, fresh air, and prevents them from overheating. Thus they arrive in safe, first-class condition when they reach you.

¶ A year ago I shipped one hundred thousand young evergreens to a foreign country, and although it took eight weeks for the voyage, every tree arrived safely. Today they are all growing in fine shape. The Hill quality of stock and the Hill method of handling and packing—THAT'S THE ANSWER.



Packing

¶ Evergreens are perishable—very perishable—and unless they are packed properly they will never arrive at their destination in good condition. They will have had a bad start—and nine times out of ten the majority of them will die.

**Evergreens
Are Very
Perishable**

¶ There's little difference in appearance between an evergreen with lifeless roots and one with live, healthy roots. You probably wouldn't notice the difference. But there's a big difference in the results after planting. One tree dies, the other grows.

¶ We are a conscientious lot of workers here at Dundee. We give our brain, brawn and muscle to evergreen growing. We know from experience that there is only one way to grow and handle evergreens successfully—the Hill way. That's why Hill's Evergreens grow, why they invariably give satisfaction. We believe in what we have to sell and we value our reputation too highly to jeopardize it in any way.

¶ **PURCHASE YOUR EVERGREENS FROM TRUE EVERGREEN SPECIALISTS.** We are the only extensive growers of Evergreens exclusively in America. This one line has our undivided time and attention, devotion and study. We are thus Evergreen Specialists in a sense which possesses a real value and significance.

¶ My expert advice is free to you—to any one interested in evergreens, and I have inherited over fifty-six years of evergreen growing experience that I want to help you with.

D. Hill President,
The D. Hill Nursery Co.

Very Important—Read This

¶ As an aid in making selection we have divided the Evergreen tree section into three divisions as follows:

EVERGREENS FOR LAWN PLANTING.....pages 10 to 23

EVERGREENS FOR WINDBREAKS.....pages 28 to 37

EVERGREENS FOR HEDGES.....pages 38 to 39

No perplexing and endless lists of varieties to puzzle over. We have done the eliminating—the sorting and sifting. We offer the best sorts in existence and **ONLY** the best—guaranteed true to name—and as we grow for discriminating customers, we supply only established plants at the lowest possible prices for quality.

“OUR REPUTATION HAS BEEN BUILT ON THE QUALITY OF OUR STOCK.”

Special Service Department.

¶ If you have some special tree planting problem that you desire information on, do not hesitate to ask us questions. We are here to render service and help you all we can whether you purchase of us or not. Our experience of over half a century may be of help to you.



Hill's Evergreens for Ornamental Lawn and Garden Planting

¶ The variety of foliage borne by the different Evergreens will prove a revelation to you; silver, light green, golden, blue, and a myriad of other shades await your option. The delicate charms of the Arbor Vitae and Firs and the rugged grace of the Spruces and Pines are yours to choose from.

¶ Perhaps you are one of the many who do not yet know the beauty of the Evergreen, or know the lure of the charming foliage and color effects of Evergreen planting. Remarkable effects may be produced by groups and rows of Evergreens—with color and foliage blending harmoniously—full of mystery at dawn or dusk. In the heat of the summer's day they seem cooling and refreshing, while in winter they add color, warmth and cheerfulness to an otherwise dreary landscape.

¶ Evergreens have so many uses for ornamentation, among the most important can be mentioned—

¶ **EVERGREEN GROUPS OR MASS PLANTING** consists of several Evergreens planted closely together, using either all one variety or an assortment. Usually a planting of this sort takes the form of a circle or oval or oblong, placing the largest trees in the center. A very interesting plan is to group different varieties in same family together, such as Juniper group, Fir group, etc. Group consisting of two, three, or four trees each, even, will give wonderful effects in a short time.

¶ **EVERGREEN CONIFER BEDS**—In making a Conifer bed the ground should first be deeply and carefully spaded up and then a good rich dressing of well decomposed manure worked in. If immediate effect is wanted, procure the larger-sized trees and mass them in quite thickly, taking care to always plant the taller-

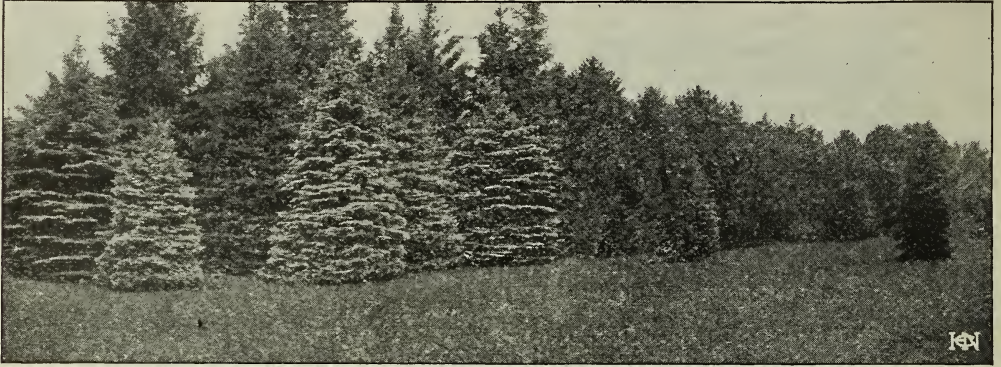
growing species in the middle or background and the low-growing varieties around the edges, or in front. Many, however, prefer to put smaller trees and plant further apart, and thus have the pleasure of observing their growth from year to year. In either case certain it is that from nothing will you derive so much pleasure as in the development of a Conifer or Evergreen bed, and nothing will add so much to the beauty and attractiveness of the home grounds. The bed can be arranged in various forms, the round bed taking the preference, although ovals, three-cornered, square or oblong are all quite popular. No phase of gardening will give the enjoyment that the constant care and culture of an Evergreen Conifer bed will, and as you watch the development and growth of each little specimen from year to year and the blending together of their vari-hued foliage, you will feel amply repaid for the little time and labor spent upon it, and not only will it lend a grace of dignity, and an air of well-being to the home grounds, but it will prove a constant source of enjoyment from year to year.

¶ **EVERGREEN BORDER PLANTINGS**—From the century-old gardens of England we get many of our best ideas in the use of Evergreens. There is absolutely nothing which can take the place of Evergreens for borders or edging purposes. The illustration herewith is only a suggestion of the many beautiful effects which are produced by the different varieties planted with a view to obtaining color and form variations. Nor need one's grounds be large, for even the very smallest lawn or dooryard can boast of at least a front walk or garden walk, along which Evergreens can be planted and serve not only to beautify the place, and increase its value, but also qualify as a good hedge or windbreak and screen.

¶ So it pays to plant handsome evergreen trees and clumps on your grounds. And it pays in more than one way. Beauty is added; privacy is insured; objectionable views are screened off; cold piercing winds and frosts are kept out; snow cannot bank up against windows—and the value of grounds is enhanced.

¶ D. Hill says: To obtain these beautiful effects with Evergreens does not necessitate a great outlay of money, nor does it require any special knowledge of horticulture. Trees of any size to suit the pocketbook, either small, medium or large, can be selected, and the only requisite for success is that they be planted carefully in good, rich soil, and simply given reasonable attention same as the rose garden or vegetable patch. Permanency and beauty are two attributes attained by Evergreens, not to be found in the flower family, which thrive and bloom for a few weeks and then are gone forever. A small initial investment in Evergreens will prove a source of enjoyment for a lifetime, and the trees grow more beautiful each year.

¶ There is unquestionably no better way of beautifying your property than by surrounding it with beautiful evergreen trees. Evergreens are a **PERMANENT** asset; they are everlasting and add to the beauty of the home winter and summer.



Splendid evergreen planting. Blue Spruce, Firs, Pines, etc.

The Blue Spruce

A Gem of the Rockies

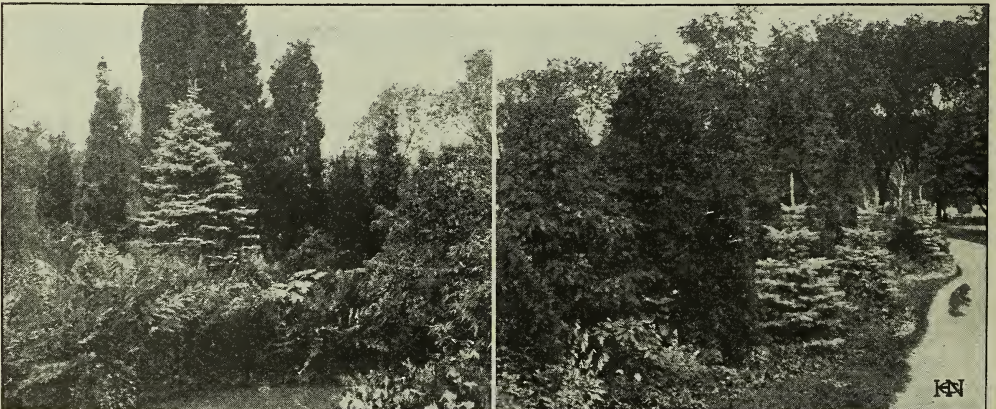
Glistening Silvery Blue in Color

Absolutely Hardy. Perfect in form and outline

Other trees there are of almost every imaginable color and form, but here is truly the culmination of nature's highest effort to produce the beautiful. Picture in your mind a perfectly shaped tree, with an abundance of heavy foliage of a rich silvery glistening blue, which flashes and sparkles in the sunlight, and you can form only a faint idea of the magnificent beauty of this truly marvelous tree. The glory of the Blue Spruce is in its foliage, which is an intense steel-blue. It is difficult to form an idea of the beauty and immensity of this phenomenal tree. It has created a great sensation throughout the United States and Europe and is indeed a triumph in evergreen growing.

As we have specialized in this variety for many years, we have succeeded in building up a magnificent stock (without doubt the largest in the world), and in walking through our Nurseries one sees block after block of these wonderful trees in all sizes and stages of growth, all being perfect in form and color, which annually attract many visitors from all over the country.

The true stock is exceedingly scarce, but we guarantee our trees to be true to name and absolutely first-class in every particular; therefore, we say, take no chances in buying inferior varieties, which bring only disappointment, but secure Hill's Blue Spruce and you will know why this great tree is so famous.



Blue Spruces, Pines, Firs and Shrubs in these borders and groups

Blue Spruces are strong, vigorous growers, holding their shape and thickness to any age, and thrive wonderfully in any soil and locality. You need not hesitate to plant them because of cold or exposed position, for they do well on the Arctic Circle.

We offer two types of this wonderful variety—the Grafted Blue Spruce and the Colorado Blue Spruce.

GRAFTED BLUE SPRUCE

These are the grafted type of the Blue Spruce, every tree being perfect both in form and color. They are propagated by special workmen, expert grafters who carefully select the grafting wood, and perform the delicate operation. This all takes place under double glass in special greenhouses and entails a long and careful process of giving each tree special treatment every day. Scions from the finest, bluest trees are grafted on vigorous seedlings, making trees that are uniformly perfect in color and shape. Afterward they are planted out in nursery rows; cut, pruned, trimmed, staked and transplanted at regular intervals until the tree has reached perfection in form and color.

Price, transplants	Each	10	Price, transplants	Each	10
1½ to 2 feet, B&B....	\$2.75	\$24.00	3½ to 4 feet, B&B....	\$6.00	\$57.50
2 to 2½ feet, B&B....	3.75	30.00	4 to 4½ feet, B&B....	7.00	67.50
2½ to 3 feet, B&B....	4.75	40.00	4½ to 5 feet, B&B....	8.00
3 to 3½ feet, B&B....	5.00	47.50	5 to 5½ feet, B&B....	9.00



Grafted Blue Spruce.

COLORADO BLUE SPRUCE

This is the true silvery Blue Colorado form of the Blue Spruce as it grows from seed, and includes only extra select specimens of highest possible blue color and good shape.

Price, transplants	Each	10	100
10 to 12 inches.....	\$0.20	\$ 1.85	\$15.00
12 to 18 inches.....	.30	2.50	20.00
1½ to 2 feet.....	.40	3.50	30.00
2 to 2½ feet, B&B Selects.....	2.50	20.00
2½ to 3 feet, B&B Selects.....	3.00	25.00
Seedlings		100	1000
3 to 4 inches, 2 yr.....		\$2.00	\$12.00



Block of Blue Spruce Trees in Hill Nursery.

View of small section of a block of Grafted Blue Spruce. Note how symmetrical and well formed these trees are. We keep these trees on the move—transplanting every two years—as a root system can be developed in no other way, and in Evergreens roots are the basis of success in transplanting.

Hemlock

The Best and Most Ornamental of all Hardy Evergreens

THE CHOICEST AND MOST BEAUTIFUL OF ALL EVERGREENS. ABSOLUTELY HARDY. ITS DELICATE FERN-LIKE FOLIAGE IS SUPERB. SATISFACTORY PLANTED EITHER ALONE OR IN GROUPS WITH OTHER TREES.

A beautiful Evergreen of graceful habit and unequalled for ornamental planting, but on account of the enormous demand the last few years has become quite scarce. For garden, lawn or park planting, this variety stands out as one of the best. Attractive at all seasons of the year, especially in the spring and summer, when the new growth comes forth a delicate light green, soft and fern-like. It is one of the few Evergreens which thrives in a partial shade. Excellent for hedges, responding readily to shearing and can be kept to any desired height or form.

Although the illustration herewith shows something of its magnificent form, no photographic reproduction could do justice to its beautiful foliage. While shearing is not necessary, if done judiciously it will grow much bushier and stronger. This tree is entirely distinct and altogether unlike any other species. It is splendidly adapted for general planting and deserves a place on every lawn in America.

Our stock consists entirely of perfect specimen trees, well grown (three to five times transplanted and root-pruned, insuring a large mass of fibrous roots), stocky, bushy, and of best Hill quality in every way. The Hemlock surely takes first place as a truly remarkable Evergreen tree, for lawn, garden, park and cemetery planting.

Price, transplants	Each		
	10	100	1000
6 to 10 inches.....	\$0.15	\$1.50	\$12.00
10 to 12 inches.....	.25	2.00	15.00
12 to 15 inches.....	.30	2.50	22.50
2 to 2½ feet, B&B sheared.....	2.25	21.00
2½ to 3 feet, B&B sheared.....	2.50	24.75
3 to 4 feet, B&B sheared.....	3.00	27.00



Hemlock



Hemlock is also splendid for hedges

CONCOLOR FIR

Queen of the Firs.

A Rocky Mountain Variety of Charming Beauty. A Native Tree of Exceptional Merit and Absolute Hardiness. Plant Liberally of This Tree and You Will Never Regret It.

A beautiful Evergreen from the Rocky Mountains, and in ornamental value second only to Blue Spruce. Its foliage is very striking, varying in color from light green to deep soft blue, and is long, soft and graceful. In appearance it is entirely different from any other variety. Being a comparatively rapid grower, it soon matures into tall, broad specimens of magnificent beauty. Indeed, it is today, without doubt, the most successful of all Firs, and has become so widely known and appreciated that it is planted extensively throughout European countries, where it is also very popular and much admired for its many sterling qualities. A tree perfectly hardy, even in the most exposed situations, and long lived, reaching at maturity a height from 60 to 80 feet. They are evenly branched and shapely, even when very young, and never lose their lower branches. Beautiful effects are produced by planting a group consisting of a combination of Concolor Fir, Blue Spruce and Douglas Fir, as their charming tints of blue contrast prettily and nothing could be more ornamental for lawn.



Concolor Fir

An eminent horticulturist writes of Concolor as follows: "A singular thing about them is, though their native home is far inland and they thrive at a high altitude, they make one of the finest coast trees that can be secured. While the sheen of other trees will fade with passing years, these retain their glory, keeping their attractiveness to the very last. In order to see these trees in all their glory you need to visit them while bearing their cones.

Price, transplants		Each	10	Seedlings		100	1000
1½ to 2	feet, B&B.....	\$1.50	\$12.50	3 to 5	inches, 2 yr.....	\$1.85	\$15.00
2	to 2½ feet, B&B.....	3.00	25.00	4 to 8	inches, 3 yr.....	2.50	20.00
2½	to 3 feet, B&B.....	3.75	32.50	8 to 10	inches, 4 yr.....	3.00	25.00
3	to 3½ feet, B&B.....	4.50	40.00				
3½	to 4 feet, B&B.....	5.00	45.00				



Splendid Evergreen planting. Refreshing and cheerful, summer and winter



Dwarf Mountain Pine

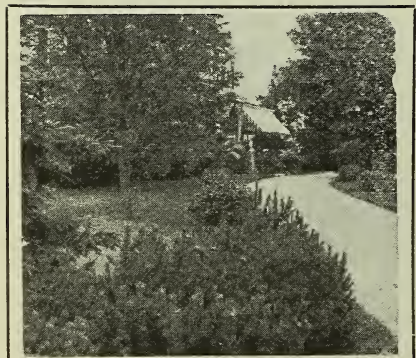
Dwarf Mountain Pine

Best of all Dwarf Trees. Rarely Grows Over Six Feet Tall. Fine for Low Borders, Beds or Singly. Absolutely Hardy Everywhere.

A variety truly superb. This beautiful little tree is not excelled by any when beauty, usefulness and adaptability are considered. Its unique habit of growth gives it a distinction and popularity seldom possessed by any Evergreen. Rarely attaining a height of six feet tall, its branches curve outward then upward from the stem at the ground, often spreading twice as broad as it is tall. It looks entirely different from all other Evergreens. Its foliage is of dark green color, the branches stiff and stubby. They are indeed one of the most rare little evergreens we offer. Its native home is in the mountains of Switzerland, from where we obtain our seeds direct. Are especially adapted for numerous purposes such as group planting, low borders, and individual specimen planting. Make up well with Junipers. Being perfectly hardy they can be planted successfully in all sections of the country. We advise placing early orders as our stock is rather limited.



Dwarf Mountain Pine



Dwarf Mountain Pine in border

Price, transplants	Each	10	100
8 to 12 inches by 8 to 12 inches\$0.35	\$ 3.00	\$20.00
1 to 1½ feet, B&B.....	1.00	9.00	75.00
1½ to 2 feet, B&B.....	1.75	14.00
Seedlings, 2 to 4 inches,		100	1000
2 year.....		\$ 1.50	\$10.00



Twenty-acre block of Evergreens, principally Junipers, Pines and Hemlocks
Note the space between each tree and the distance between rows.

SWISS STONE PINE

An Ornamental Pine—Grows only 15 to 25 Feet Tall. A European Introduction Destined to Become a Leader. We Have Tested it Thoroughly and Recommend it Highly. Absolutely Hardy.

A handsome, hardy species that was introduced into cultivation about the year 1746, from the highest regions of the Alps, between 4,000 and 6,000 feet elevation. It forms a handsome, regular tree clothed with branches to the ground, very dense in growth and hardy enough to withstand the most exposed situations. Fine for use as a single specimen, and admirable for mass or group plantings, as its dark foliage is striking and forms a splendid contrast with other varieties. An excellent quality in the Swiss Stone Pine is its ease of adaptability to almost all kinds of soils and situations. A medium fast grower and at maturity reaches a height of 25 feet. A most commendable variety both for its beauty and utility.

Price,			
transplants	Each	10	100
10 to 12 inches.....	\$0.30	\$ 2.25	\$18.00
1 to 1½ feet, B&B..	1.00	9.00	75.00
1½ to 2 feet, B&B..	1.85	12.00
2 to 2½ feet, B&B..	2.00	15.00
3 to 3½ feet, B&B..	3.00	25.00
4 to 5 feet, B&B....	6.00	50.00

"My Evergreens came all right. They are the finest lot of trees I ever saw. Thanks for the present of Spruce and extra Concolor. Every one of those ordered last year grew and are looking fine."

POMEROY MATHER,
Washington, Iowa.



Swiss Stone Pine

AMERICAN ARBOR VITÆ

Best Tree for General Planting in Existence

No Evergreen, either native or introduced, will endure so much hardship and grow on so great a variety of soils as the American Arbor Vitæ. We have the largest and finest stock of this variety in the country and guarantee our trees to be absolutely first-class in every particular. We have featured this noteworthy variety for many years, becoming expert in its propagation, until Hill's American Arbor Vitæ are now acknowledged to be the finest procurable. They have that which is of prime importance—a hardy, vigorous constitution, with an abundance of strong, healthy, fibrous roots.

For Hedge Purposes it is unsurpassed. Owing to its compact appearance when sheared and its bright green color, it is without doubt the best tree for hedge purposes that grows. Being perfectly hardy and of comparatively rapid growth, it forms a beautiful, compact hedge in a remarkably short time. It is pre-eminently a tree without an equal for practical utility and ornamental value. There is not a lawn, no matter of what proportion, where an Arbor Vitæ hedge would not enhance its beauty to a high degree.

For Group Planting it is unexcelled, and when planted in this manner it grows tall, stately and pyramidal, its beautiful, flat, fern-like foliage overlapping each other, forming splendid, symmetrical specimens unsurpassed for rich beauty. The permanent attractiveness of one's home surroundings is undeniably incomplete without a group of these charming trees, which, growing tall and symmetrical, became more beautiful each year.

Windbreaks, Shelterbelts and Screens. For practical purposes such as windbreaks for stock pastures, poultry yards, orchards, gardens and buildings, it is rapidly becoming more popular each year. By planting quite close together, as in illustration, their branches interlock closely, forming a barricade through which cold, piercing winds cannot penetrate.

PRICE OF AMERICAN ARBOR VITÆ

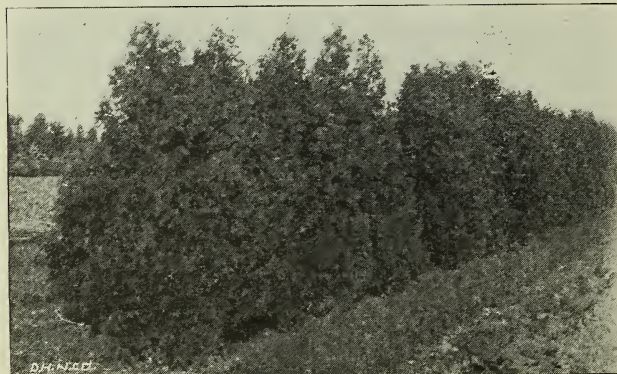
Price, transplants	Each	10	100
6 to 12 inches.....	\$0.15	\$1.00	\$4.00
12 to 18 inches.....	.20	1.50	5.00
18 to 24 inches.....	.25	2.00	9.00
2 to 3 feet.....	.30	2.50	12.00
3 to 4 feet, B & B.....	1.00	9.00
4 to 5 feet, B & B.....	2.25	20.00
5 to 6 feet, B & B.....	4.00	35.00
6 to 7 feet, B & B.....	5.00	45.00
Sheared Specimens	Each	10	
2½ to 3 feet, B & B.....	\$0.75	\$ 5.00	25.00
4 to 5 feet, B & B.....	3.00	5.00	40.00
5 to 6 feet, B & B.....	5.00	6.00	50.00
6 to 7 feet, B & B.....	7.00	7.00	60.00
7 to 8 feet, B & B.....	100	1,000	
Seedlings			
3 to 4 inches, 2 yr.....	\$1.25	\$6.00	



American Arbor Vitæ



Group of American Arbor Vitæ



Windbreak of American Arbor Vitæ

Planting and Care of Evergreens

Do not let the roots become dry or exposed to the wind and sun. Dip the roots in water before planting. The size of the hole will depend upon the size of the tree to be planted; it should be large enough to hold the clump of roots without crowding. All trees appreciate rich soil,—and if the surface soil is of better quality than that found further down, as frequently happens, put a small quantity of this to one side and replace it in the hole before the tree is inserted. After adjusting the roots in the hole, fill the earth in thoroughly around them, packing the soil firmly with the ball of the foot. After planting, water thoroughly and apply mulch of coarse manure or well-rotted straw. Always water generously during the months of July and August.

PYRAMIDAL ARBOR VITÆ

A Variety of Exceptional Merit

A variety entirely distinct, growing tall and straight to a shaft or spire-like form, almost as large at top as at base, as will be seen from illustration. This beautiful tree grows close and compact, and the foliage is of a bright green hue at all seasons. A page of description would fail to do this tree justice. One of the grandest varieties in the book, with so many good qualities that it is rapidly growing in favor. It combines all the good points of the Arbor Vitae, and has many features distinctly its own. This variety has a constitution which will enable it to stand severe winters, and with its many other strong points has caused it to take high rank in every section of the country. We stake our reputation upon the quality of this variety—the best in the world. These require no shearing or trimming, developing naturally to perfect pyramidal form. For group planting on lawns, etc., they are exceptionally ornamental, and it is truly a variety of remarkable merit in every respect—one to which we give our highest endorsement.



Young Pyramidal Arbor Vitae

Price, transplants	Each	10	100
6 to 10 inches.....	\$0.20	\$1.50	\$10.00
12 to 18 inches.....	.30	2.00	18.00
18 to 24 inches.....	.40	3.00	25.00
3 to 4 feet, B & B.....	2.50	20.00
4 to 5 feet, B & B.....	3.25	30.00

PEABODY'S GOLDEN ARBOR VITÆ

A Superb Golden-Foliaged Variety

A choice variety produced by grafting, and for exquisite form and beauty of foliage it is unsurpassed. Such an abundance of bright golden color is seldom borne on a single tree, but this one fairly glows and sparkles. Among the many so-called golden species which have been introduced there are none which stand out so strikingly or possess so great a superiority as this marvelous beauty with its soft, glowing golden foliage. This, and its many other excellent qualities have carried it to the inmost place in the hearts of all lovers of the beautiful in nature. It has the same vigorous constitution typical of all Arbor Vitae. Since introduced we have always regarded this variety as one of the leaders in our vast collection of highly colored evergreens, and as our friends become acquainted with it, they join us in similar admiration of its exquisite form and delicate beauty. It is certainly one of the most charming varieties of the whole Arbor Vitae family. A strong and vigorous grower, usually attaining a height of 15 to 20 feet, forming a handsome, narrow, pyramidal tree.

Hill's Peabodys are elegant specimens, carefully trimmed and trained to a neat pyramidal form. Hardy in every section of the country and can be planted anywhere with entire success.

Price, transplants	Each	10	100
6 to 10 inches.....	\$0.35	\$ 3.00	\$20.00
3 to 3½ feet, B & B.....	3.00	25.00
3½ to 4 feet, B & B.....	3.50	30.00

SIBERIAN ARBOR VITÆ

The Siberian Arbor Vitae is well suited for low hedges, growing dense and compact. Foliage of deep green. Extremely hardy. Single trees planted are very attractive.

This species is not of new origin, but is one of the old standard sorts known and appreciated for many years, still retaining all its popularity. It is thought to have originated in the famous Royal Gardens in England, but named Siberian because of its rugged constitution, and ease of adaptability to all soil and situations. Its cones are identical with the American Arbor Vitae, although its habit of growth is entirely different.

Price, transplants	Each	10	100
8 to 10 inches.....	\$0.20	\$1.50	\$10.00
10 to 12 inches.....	.30	2.00	15.00
12 to 18 inches.....	.45	4.00	30.00
1½ to 2 feet, B & B.....	1.50	12.00
2 to 2½ feet, B & B.....	2.00	15.00



Peabody's Golden Arbor Vitae



Tom Thumb Arbor Vitae

Price, transplants
12 to 18 inches.....

**TOM THUMB
ARBOR VITÆ**
Hill's Best Genuine Dwarf Form

A very neat appearing tree, and dense and perfect in form, having innumerable small branches closely packed together. One of the most delightful little trees we offer and valuable both for its interesting foliage and wonderful form, as it readily adapts itself to shearing and can be trimmed to perfect balls, pyramids or globes. Being entirely hardy it can be grown successfully in all parts of the country. It is really a valuable species and well merits its popularity.

Each	10	100
12 to 18 inches.....	\$0.30	\$2.25
		\$18.00



Globosa Nova Arbor Vitae

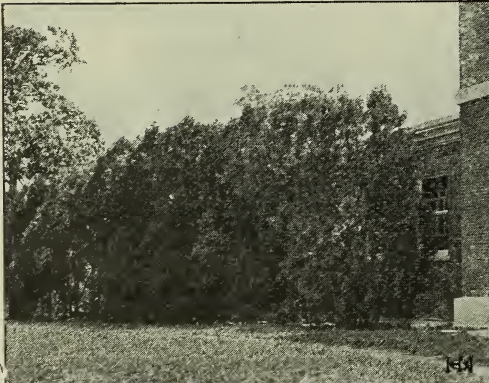
**GLOBOSA NOVA
ARBOR VITÆ**
A Grand New Variety

Novel Beautiful Noteworthy

A very handsome variety and entirely new. Undoubtedly one of the most attractive dwarf trees offered. In shape it is absolutely round or globular, very dense in growth, and does not require shearing. It seldom grows over a few feet tall; its foliage is a deep dark green, its little branchlets being of unusual delicacy. It is suitable for lawn, dooryard, windowbox, terrace planting, being absolutely hardy everywhere. These are grafted trees and very rare and hard to propagate, thus the available supply is somewhat limited. It is difficult to form an idea of the beauty and attractiveness of this phenomenal species until you have seen it. It

is truly a sensational triumph in horticulture. A genuine treat is in store for everyone who plants this variety of Arbor Vitae.

Price, transplants	Each	10
15 inches by 15 inches, B&B.....	\$2.50	\$20.00
1½ to 2 feet, B&B.....	3.00	25.00



American Arbor Vitae Screen

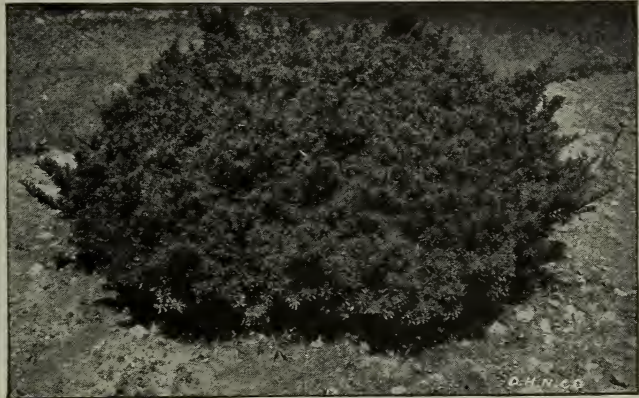


Various Young Arbor Vitae

JAPANESE YEW

A Jewel from the Orient

This rare and remarkable variety, introduced from Japan many years ago, has taken its place as the most noteworthy and valuable on the entire list. Originating in the cold high altitudes on the mountains, is fully able to successfully withstand extremes of heat and cold. In height it seldom ever grows taller than 15 to 20 feet, its branches growing close and compact, forming a symmetrical body of unsurpassed beauty. This charming tree has many excellencies to recommend it for group and masses, as well as for planting singly on the lawn. Its foliage is beautiful in the extreme and entirely different from any other variety. The needles, which are exceedingly sharp and pointed, are very dark green above, and on the under side a light glaucous sheen is apparent both winter and summer and the numerous slender branchlets are densely covered with



Japanese Yew

foliage. The Yews are proverbially long-lived and instances are given where they have existed for centuries, growing more beautiful year by year, until at maturity they are a sight wondrous to behold. The demand for this Yew has always been greater than the supply, and while their culture and care is simple, yet are exceedingly difficult to propagate.

Price, transplants	Each	10	100
8 to 10 inch	\$0.50	\$ 4.50	\$30.00
1 to 1½ feet, B&B	1.50	10.00
1½ to 2 feet, B&B	2.00	18.00

AMERICAN YEW

A Superb Native Variety

This magnificent tree is one of the grandest, hardest Yews in existence. It is undoubtedly the most distinct and valuable variety of the entire family. It is to America what the grand old English Yews are to England, the national tree. Although growing very slowly, it possesses a peculiar tint in the color of its foliage, so far unapproached by any other variety. It is admired for its appropriateness in parks and cemeteries, but especially is it popular for small lawns and dooryards where space is limited. The foliage is a deep, dark glossy verdant green, with a peculiar richness, and a certain stiff formality in growth that pleases the taste of every one. In size this remarkable tree rarely grows over 5 feet high and about twice as broad, and in season is fairly covered with bright red edible berries, which contrast very prettily with its dark green foliage.

American Yew

Price, rooted cuttings, 6 to 8 inch, Each, \$0.30; 10, \$2.25; 100, \$15.00. 8 to 10 inch, Each, \$0.50; 10, \$4.50; 100, \$30.00.



Young American Arbor Vitae



American Arbor Vitae twenty years old



What can be done with Junipers



Junipers and other evergreens

Hill's "Unequaled" Collection of Hardy Junipers

For Lawn Planting

The Ten Very Best Varieties. All Hardy—All are Satisfactory

There are just as many varieties of Junipers as there are of Pines, Spruces, etc., and these varieties differ in form, foliage and habit to a striking extent. The ten sorts we offer are selected from over fifty varieties, many of which we have found are either of uncertain hardiness, or not adapted to varying climatic conditions so that the ten varieties offered are each absolutely distinct types, have been fully tested as to hardiness and adaptability, and chosen for marked characteristics of beauty and utility.

JUNIPER GLAUCA

The Most Remarkable Juniper in the World

Sparkling Silvery Blue Color—Upright Form—The King Among Junipers

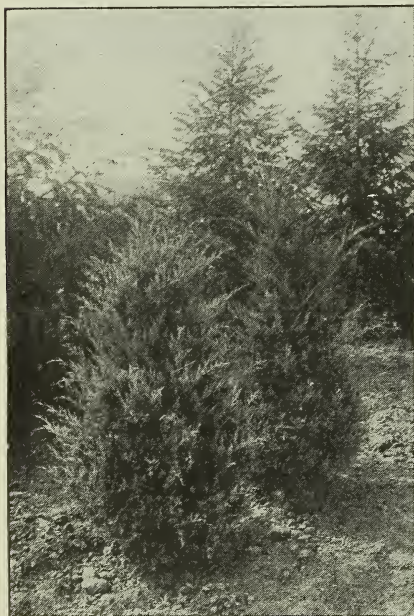
Again we desire to call your attention to this magnificent tree which maintains itself as one of the best that has ever been introduced into this country from Europe. From the standpoint of beauty, form and hardiness it is pre-eminently the "King" among Junipers. An Evergreen of the most beautiful type, it is perhaps the best known of all new varieties and is now widely planted throughout the United States, in all ornamental lawn and garden plantings. It grows very rapidly and assumes early an unusually graceful habit. The foliage is slender and pendent, yet vigorous and a light silver blue in color, forming the most perfect round, shapely tree imaginable. Add to the above points of superiority the sterling qualities of longevity and practical utility, we find Juniperus Glauca to be undoubtedly one of the best trees in the world for general planting. Our stock is extra choice, of uniform shape and color.

Price, transplants	Each	10
1½ to 2 feet, B&B.....	\$1.85	\$15.00
2 to 2½ feet, B&B.....	2.25	18.75
2½ to 3 feet, B&B.....	2.65	22.50
3 to 3½ feet, B&B.....	3.75	33.75
3½ to 4 feet, B&B.....	5.60	52.50
4 to 5 feet, B&B.....	6.35	60.00

GOLDEN JAPANESE JUNIPER

A most charming variety with light golden foliage. When young the tree is prostrate and trails along the ground; but as the years pass it gradually grows erect, in a conical form. The odd form and the handsome color attract every time. There are few other trees in cultivation which resemble it. We recommend it highly.

Price, transplants	Each	10
2 to 2½ feet, B&B.....	\$2.50	\$22.50
2½ to 3 feet, B&B.....	3.00	25.00



Juniper Glauca

Schotti's Juniper

A Distinct Dark Green Variety

Rich Dark Green Foliage—Strong Upright Grower

A native of Europe, found growing originally at a considerable elevation on the mountains. It forms one of the most beautiful of ornamental trees, being very compact and conical in shape, and completely clothed with a mass of foliage, of a charming dark green color, which, during some seasons, is generously interspersed with large, bright purple berries. Altogether it is a remarkable variety and without equal in its class. In addition to its ornamental qualities we find it to be a tree absolutely hardy everywhere, of moderately rapid growth, easily adapting itself to all conditions of soil and climate. When sheared yearly they form a very desirable tree for planting in tubs and boxes to be used for decorating porches, steps, walk borders, formal gardens, etc. Grows 16 to 20 feet in height.



Schotti's Juniper

Price, transplants		Each	10
1½ to 2	feet, B&B.....	\$1.50	\$12.50
2½ to 3	feet, B&B.....	3.00	25.00
3 to 3½	feet, B&B.....	4.00	35.00
3½ to 4	feet, B&B.....	4.50	40.00

PFITZERIANA JUNIPER

A Fine New Hardy Juniper

Entirely hardy, and has peculiarly delicate silvery foliage. When fully grown it is a beautiful, bushy tree with graceful outline. Desirable in border planting and singly; also does well in conifer beds.

Price, transplants		Each	10
12 to 15	inch.....	\$0.50	\$4.50
2 to 2½	feet, B&B.....	4.00



Evergreens planted along driveway



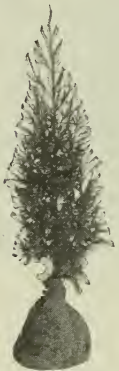
Mass planting of Sabina Junipers

Sabina Juniper

A Beautiful Dwarf Juniper

Splendid for Borders, Rockeries, Edging and Conifer Beds.

A dwarf form of hardy Juniper with trailing or spreading branches, rarely attaining a height of over 3 feet, forming a flat crown several feet in diameter. With its fine dark green color, its unique beauty and attractiveness is unexcelled. There is such an air of gracefulness and lightness in the easy rounded curves of each little branchlet of this rare little tree that it commands admiration of every lover of Evergreens. It is valuable for border planting in front of taller growing Evergreens and superb for planting in wild, rocky landscape, or for covering unsightly features on the lawn. Several of these trees massed closely together present an attractive appearance on account of their healthy, vigorous, though dwarfish growth, and peculiar somber-hued foliage. This variety is an introduction from southern Europe, and our stock comprises strong, well-grown trees of extra quality.



Red Cedar

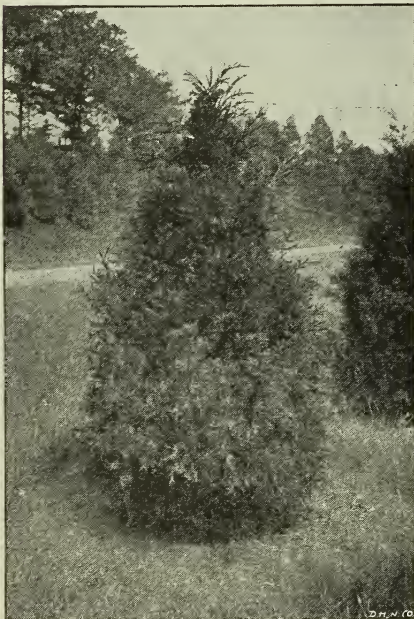
Price, transplants	Each	10
6 to 10 inch.....	\$0.50	\$ 4.50
12 to 15 inch.....	.75	6.00
2 to 2½ feet, B&B.....	2.25	18.75

RED CEDAR

Red Cedar is the American Cedar, and certainly is worthy of strong endorsement for general planting. The trees are hardy and grow fast and thick. Tall, like a column, with bronze-green foliage, especially in winter. In season it is literally covered with bright blue and silver colored berries which adhere to the branches a long time. Its foliage emits that pleasing, woody, cedrus odor so characteristic of the Cedars and Junipers.

Certain it is, its beautiful foliage and graceful form has attracted world-wide attention. It also has that which is of prime importance—an absolutely hardy, vigorous constitution, forming a symmetrical tree of wonderful sturdiness. The foliage is beautiful, rather soft in texture, and takes a graceful habit of growth. It is a tree absolutely perfect in every particular, and our thorough trials lead us to endorse it in the most enthusiastic terms. It surely takes a place in the front ranks as a truly remarkable tree, suited in every particular for our varying climate needs.

Price, transplants	Each	10	100
6 to 10 inches	\$0.25	\$ 1.50	\$10.00
12 to 18 inches35	3.00	18.00
18 to 24 inches50	4.00	30.00
2 to 3 feet75	6.00	50.00
4 to 5 feet, B&B.....	3.25	30.00
5 to 6 feet, B&B.....	4.25	40.00



Red Cedar

Lee's Elegants Juniper

A commendable variety of unexcelled beauty. Foliage Bright Golden Color—graceful drooping form. A gem of beauty.

A superb variety and fittingly described by the introducer as a real variegated Golden Juniper. Its foliage is remarkable, its branches taking a symmetrical drooping form, with color of dark, rich green tipped with bright golden. Long lived and hardy, growing to perfect form without shearing. Rarely exceeding 20 feet in height. Undoubtedly the greatest achievement of the past decade. It is a tree that has so many good qualities we are certain it will find a place in the garden of every tree lover. It has been thoroughly tested by us and we have formed such a high opinion of it that this year we have grown an unusually large stock in order to give this valuable variety the widest possible distribution. It is splendidly adapted for general planting and deserves a place on every lawn in America.



Lee's Elegants Juniper

Price, transplants	Each	10
2 to 2½ feet, B&B...	\$2.75	\$24.75
2½ to 3 feet, B&B...	3.00	27.50
3 to 3½ feet, B&B...	4.25	37.50

TRAILING JUNIPER

A valuable Creeping or Trailing variety. Absolutely hardy everywhere—unsurpassed for rich beauty.

This is really the most unique hardy little tree in all the collections of Junipers. It trails, or more properly speaking, creeps upon the ground, its delicate, feathery-like branches oftentimes covering a space of ground 10 or 12 feet in diameter. Its foliage is a deep dark green, turning to a purplish hue during the winter months. It thrives well in shady places and does not require such a rich soil as many other varieties. A vigorous grower much used for terraces and rockeries, and is immensely attractive when placed in borders before taller growing Evergreens. It should be in every lawn or garden of every lover of beautiful Evergreens. Described by an eminent horticulturist as a "marvel of rich beauty." It is a sensational triumph in Evergreen growing.

Price, transplants	Each	10
1 to 2 feet, B&B	\$1.85	\$15.00



Trailing Juniper

HILL'S EVERGREENS FOR WINDBREAKS



Norway Spruce windbreak

I am proud to be called Hill the Evergreen Man

☞ I have been growing and selling Evergreens and planting Evergreen Windbreaks for over fifty years—so long that the name Hill is inseparably connected with Evergreens wherever Evergreen trees are known and planted.

☞ I count among my friends thousands of farmers who have planted my Evergreen windbreaks, which have **GROWN SUCCESSFULLY** and steadily returned big dividends of profit and satisfaction year after year.

☞ In over thirty states there is not a county that does not have a Hill Evergreen windbreak and in many states I have customers in every city, town and hamlet, and every customer is my friend. I count this as one of the greatest rewards of my success as an Evergreen grower. I would not exchange this confidence and friendship for all the wealth in the universe.

¶ On my own farms in Minnesota, Michigan, Iowa and South Dakota I planted Evergreen windbreaks and watched their success. In 1882 I planted on my Minnesota farm, in Wattawon county, an Evergreen windbreak of one thousand trees. I saw that farm in a few years increase in value 50 per cent over adjoining farms that did not have Evergreen windbreaks, and when I finally sold it and bought another in 1890, I readily got \$92.00 per acre, when nearby farms without windbreaks were without buyers at \$35.00 to \$50.00, and my farm was actually worth that much more than the others because it would raise **BIGGER CROPS**, wheat and oats that would go that many more bushels to the acre.

¶ This farm would fatten stock quicker and at less cost than was the case on bleak, cold, wind-swept farms. And the farm was more livable and better looking.

¶ I confidently believe that a properly placed windbreak is the biggest permanent asset any farmer can add to his acres. The United States agriculture experts all concur in this opinion and modern farmers the world over know this to be true. That's why I tell you there should be an Evergreen windbreak on **YOUR** farm.

¶ It will keep your stock warmer, healthier and allow them to fatten quicker and with less food. It will give you larger and better crops. It will make your garden and pastures one or two weeks earlier every spring. It will raise the selling value of every acre you own by beautifying it and making it more productive. The damage done by winds to growing crops is well worth looking into—and preventing.

¶ Evergreen windbreaks accomplish this, conserve the natural moisture in the soil and are an absolute necessity if you want to get best results either from the standpoint of quantity or quality.

¶ For orchard protection a Hill windbreak is of vital importance. Why allow your fruit to blow off the trees? Why stand idly by and let these hard-earned dollars actually slip right through your fingers?

¶ Here's an example of what might have been avoided with a Hill windbreak: A leading fruit magazine tells of how an apple grower in Missouri lost over \$9,000 when almost his entire crop blew off near ripening time.

There were twenty acres in the orchard, and the crop was an exceptionally good one. Two days before the storm the owner had refused \$15,000 for the apples on the trees. He thought he could do better by letting them color up a little more, but it didn't turn out that way, for he did \$9,700 worse. The storm blew off three-fourths of all the apples and damaged most of those remaining so that the whole crop brought only \$5,300.

¶ This is an exceptional incident, but thousands of orchardists all over the country lose untold amounts from fruit blowing off during the last two months of summer. Even if only one bushel in ten would blow off, the amount lost in a large orchard would run into thousands of dollars. Most of this damage is preventable. Proper windbreaks of Evergreens would so lessen the force of the wind that very few of the apples would blow off.

¶ Windbreaks, screens and live fences of spruces, pines, firs, etc., and individual trees here and there about the yard and along driveways, are simply wonderful in their power to change a dreary house into a comfortable home. It is well known that they will pay handsome profits on their costs.

¶ Put a double row of Hill Evergreens around your garden, except towards the house, and just see how much difference there is in the temperature and moisture. You will find that in the protected garden you can grow shrubs and fruit and vegetables that you never could before, crops that could not be matured a quarter of a mile away.

¶ At one farm home in the Central West, they adopted the following plan with very good results. The situation was exposed and needed protection, while the owner, who did the planting, had what some of the neighbors called a "fool streak," but which in reality was a lively artistic sense. Two rows of Norway Spruce and White Pine, planted five feet apart in rows six feet apart, entirely around the north, west and south sides of house, enclosing the house, the barn and the stock yards, and varying from 125 feet to 275 feet away; then sixteen feet inside these rows a duplicate two rows was set. Thirty-two feet inside of this a double row of American Arbor Vitae was set 12 feet apart each way. Still inside of these another row of white spruce was set the same as the white pines. This whole planting covers a width of about 115 feet. Near the house it is 150 feet from the buildings, but at the stock yards and near the barn, where snow drifts do not interfere, it is right up close.

¶ The trees have been planted about six years now and have reached considerable size. Already the protection afforded is sufficient to make a remarkable difference. The owner says that he uses 20 per cent less coal in the house in the winter than he used to. On driving home, as soon as he strikes the charmed space enclosed by the break, the climate is at once modified, no matter how hard the wind is blowing out on the unprotected road.

¶ Evergreen windbreaks are actual profit makers and money savers each and every day in the year. No expense is attached to the windbreak after the trees are once planted out, and they are steadily growing into money all the time. The thinnings alone more than furnish the average farmstead with all firewood and timber needed on the farm.

The Proper Distance to Plant Evergreens in Your Windbreak Row

¶ We find through many years of experience that Evergreens, set quite close in the row and given plenty of room between the rows, will give you far better results than if the trees are scattered about in too many rows. We would, however, advise setting such trees as the Norway Spruce and White Pine six to eight feet apart in the row, and the rows should be twenty to twenty-four feet apart. Such trees as the Douglas Fir or White Spruce should be set about six feet apart in the rows, and the rows about twenty feet apart.

¶ We would especially recommend to the farmers who are building up new homes or setting out their first windbreaks, to be positively sure that they get their windbreaks far enough from their farm buildings—that is that they enclose enough ground that their yards will not be crowded in the least. If, however, they desire any special instructions along these lines, we would ask that they draw a diagram of their farm, and send it to us, as it will greatly assist us in making recommendations.

We Are Ready to Help You

¶ It may be, for example, that you have some tree problem that we could help you to solve. We have had over half a century's experience with Evergreen trees in all parts of the country and perhaps this experience might be of help. Do not hesitate to write us fully.

THE NORWAY SPRUCE

HILL'S BEST EVERGREEN FOR WINDBREAKS

A sure, fast grower—bushy—transplants easily—absolutely hardy—unequaled for quality. Unqualifiedly "THE LEADER" for windbreaks

The popularity of the Norway Spruce throughout the United States is due to its extreme hardiness, rapidity of growth, sureness of growing after transplanting, and great usefulness as a windbreak, shelterbelt or screen.

D. Hill says: "If I were asked what variety of Evergreen is best for general windbreak planting I would say unhesitatingly THE NORWAY SPRUCE. It has stood the test of time. I have tested it out and watched it grow year after year in all parts of the country. Norway Spruce windbreaks that I sold over fifty years ago are still giving service, growing steadily and satisfactorily and saving and making big money for their owners each year. I cannot add stronger testimony as to its worth than to say that I use Norway Spruce exclusively for windbreak on my own farms."

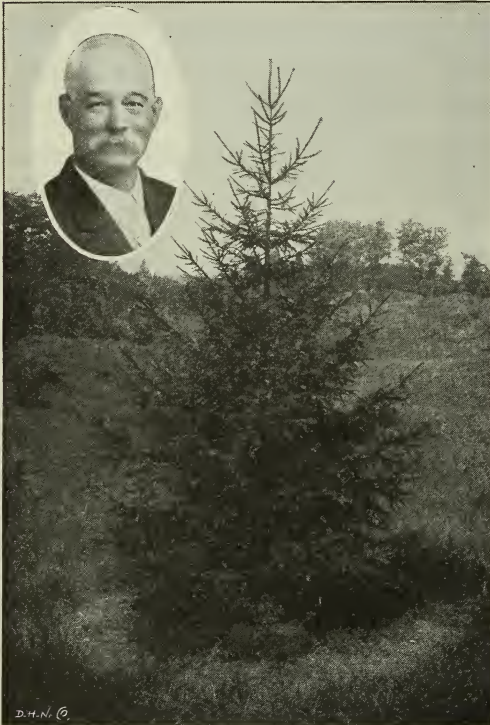
It admirably adapts itself to all conditions and combines practical usefulness with ornamentation wherever used. Its dense growth forms an almost impenetrable barrier to the sharp cold winds and frosts that are so damaging to stock and crops. Many fruit orchards are protected from the icy blasts from the north by rows of Norway Spruces along the boundary lines.

So valuable have they become, both in winter and summer, as conservers of vitality and strength to cattle and crops alike, that many farmers estimate an increased value of at least 25 per cent having been added by the planting of this Spruce for windbreaks and shelters.

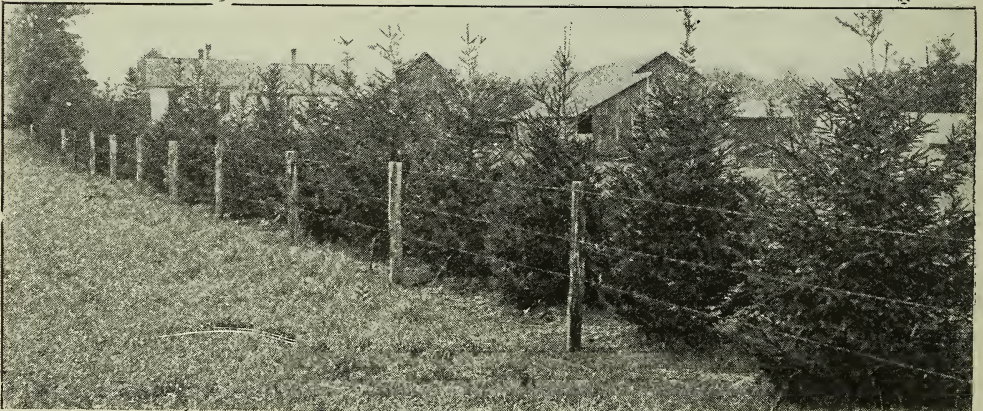
For planting along line fences, between fields, walks, borders, drives and around orchards, vegetable gardens, about barns, stock shelters, pig-pens, poultry runs, apiaries, the rapid growth and masses of dense foliage of this evergreen forms a quick and permanent shelter during winter and summer that is unequalled.

Price, transplants	Each	10	100
10 to 12 inches.....	\$0.15	\$ 1.00	\$ 4.50
12 to 18 inches.....	.20	1.50	6.00
18 to 24 inches.....	.25	2.00	12.00
2 to 3 feet.....	.30	3.00	18.00
5 to 6 feet, B&B..	5.00	48.75
6 to 7 feet, B&B..	6.00	56.25

Seedlings	100	1000
3 to 4 inch, 2 yr.....	\$ 1.00	\$ 3.50
4 to 8 inch, 2 yr.....	1.50	5.00
8 to 10 inch, 3 yr.....	1.65	6.00



Single Specimen of Norway Spruce



A young Norway Spruce windbreak

THE NORWAY SPRUCE

Equally Valuable for Ornamental Planting

We would especially recommend to farmers who are building up new homes or setting out their first windbreak, to be sure they get their windbreaks far enough from their farm buildings. If special information is desired along this line, send in a diagram of your farm—showing buildings, etc., and we will be pleased to help you.



Read what the Agricultural Experiment Stations Say

ILLINOIS—Norway Spruce is one of the best Evergreens for windbreaks for this state. Experimental Station, Urbana, Ill.

IOWA—Very valuable—an excellent grower—hardy—easy to handle—an all around satisfactory tree. Experimental Station, Ames, Iowa.

MASS.—The Norway Spruce is hardy and satisfactory here. Mass. Agric. College, Amherst, Mass.

MISSOURI—Norway Spruce is a sure grower and entirely reliable. University of Mo., Columbia, Mo.

MICHIGAN—Varieties best suited for this state are Norway Spruce, White Pine, Jack Pine. J. Fred Baker, Experiment Station, East Lansing, Mich.

WISCONSIN—Norway Spruce, White Pine and Jack Pine are the best species for this state. E. M. Griffith, State Forester, Madison, Wis.

NEBRASKA—Planted all over state and does well. W. J. Morrill, Prof. of Forestry, Lincoln, Neb.

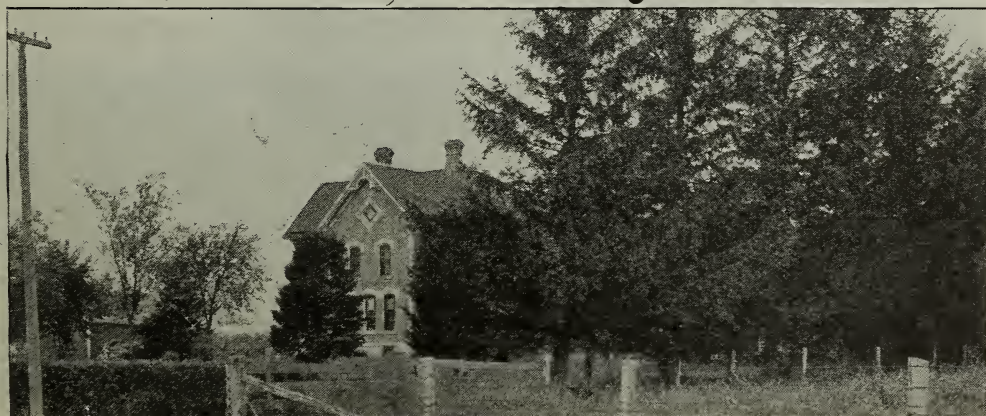
KANSAS—The Norway Spruce grows successfully in Kansas, except in extreme West, where Scotch Pine is better suited. Chas. A. Scott, State Forester, Kansas State Agric. College, Manhattan, Kan.

OHIO—The Norway Spruce is well adapted to this state. Ohio Agric. Exp. Station, Wooster, Ohio.

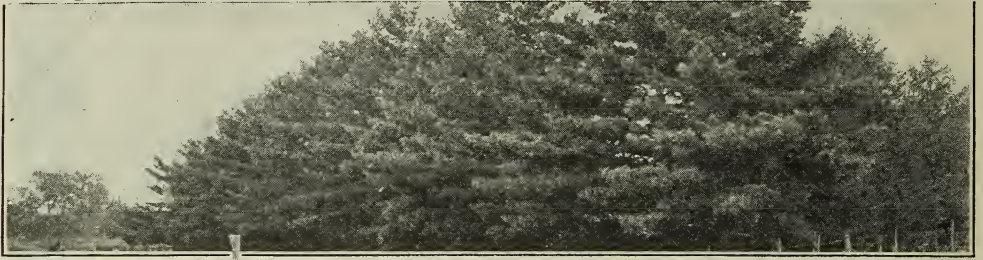
MINNESOTA—Norway Spruce do well anywhere in the state. Dept. of Agriculture, University Farm, St. Paul, Minn.



Norway Spruce is very stately and vigorous



Norway Spruce Windbreak protecting house and yard



White Pine

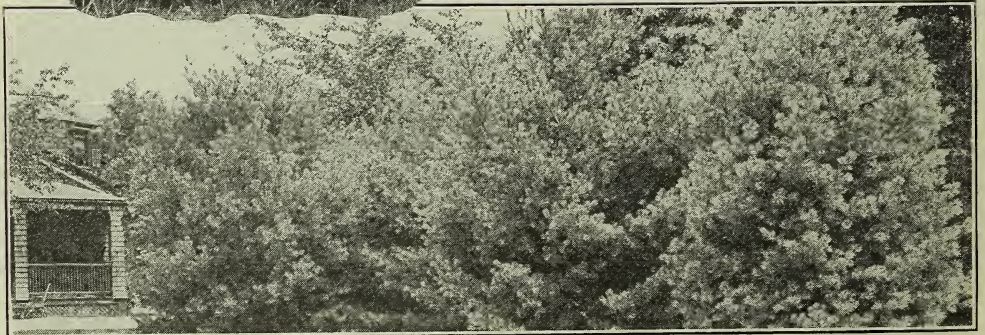
White Pine makes perfect windbreaks

The White Pine

King of the Forest

A Rapid Grower. Long Lived. Does Well Everywhere. Makes Perfect Windbreaks, Shelterbelts or Screens. A Big Money Saver for Stock or Grain Farmers, Orchardists, Poultrymen, Beekeepers.

D. Hill says: This greatest and most valuable of American Pines is unquestionably a most reliable Evergreen for general planting and should go into every windbreak, shelterbelt or screen. It is absolutely hardy, thrives well on all classes of soils and is impervious alike to either extremes of heat or cold. Plant liberally of this tree and you will never regret it. They will prove a good investment, adding many dollars to the worth of your property. The White Pine grows tall and straight, with dense foliage and finally reaches a height of 100 to 150 feet. Cases are on record where they have made five feet of growth in three seasons. Wherever planted this tree has made an enviable record for general reliability and practical value.



White Pine planted in group used as windbreak and screen



White Pine windbreak

The White Pine

King of the Forest

A Rapid Grower. Long Lived. Does Well Everywhere. Makes Perfect Windbreaks, Shelterbelts or Screens. A Big Money Saver for Stock or Grain Farmers, Orchardists, Poultrymen, Beekeepers.

Among the entire Pine family there is none of such noble or stately habit of growth as the White Pine. Its foliage is truly beautiful. In color it is a soft green with just a tint of delicate blue upon the under side of its needles.

Price, transplants	Each	10	100
6 to 12 inches	\$ 0.15	\$ 0.75	\$ 4.00
12 to 18 inches35	2.00	10.00
18 to 24 inches40	3.00	18.00
2 to 3 feet50	3.50	22.50
3 to 4 feet, B&B	1.85	16.00
4 to 5 feet, B&B	2.50	20.00
5 to 6 feet, B&B	3.50	30.00
6 to 7 feet, B&B	5.00	40.00
7 to 8 feet, B&B	7.50	60.00
9 to 10 feet, B&B	10.00
10 to 11 feet, B&B	12.00
Seedlings		100	1000
3 to 6 inches, 2 yr.....	\$1.50	\$6.00	



White Pine Windbreak



White Pine planted in group used as windbreak and screen



Douglas Fir windbreak protecting nursery stock. Makes an excellent shelter



Douglas Fir

color during the winter. No Fir or Spruce takes on a more graceful form than this and none will likely retain their beauty for a longer time. The Douglas Fir is also the great Evergreen of Washington and Oregon."



Fir Cone

DOUGLAS FIR

**A Handsome, Valuable Windbreak Tree
A Rocky Mountain Variety. Fast, Strong,
Sturdy Grower. Grows to Perfection North,
East, South, West.**

A variety from the Rocky Mountains and always referred to as one of the most beautiful and valuable of American Conifers. Has strong upright habit of growth, with beautiful soft green foliage upon long drooping branches. Being perfectly hardy, enduring extreme heat as well as extreme cold, it can be planted successfully in all portions of the country. Grows to large size, often reaching a height of 50 to 60 feet.

PROF. S. B. GREEN OF MINNESOTA SAYS—"The Douglas Fir is a fine tree of graceful proportion, good color, rapid growth and wonderful hardiness. Probably one of the most valuable Evergreens for general planting in Minnesota."

IOWA STATE COLLEGE BULLETIN SAYS—"In hardiness it ranks with the White Pine. In rate of growth it may be compared to the Norway Spruce, though longer lived, but just as valuable for general planting."

MONTANA AGRIC. EXPERIMENT STATION BULLETIN STATES—"Douglas Fir is a native of Montana and perfectly hardy. It is valuable for windbreaks and shelterbelts and is also good for group planting on the lawn. It is a fast growing Evergreen and easy to transplant."

SOUTH DAKOTA AGRIC. EXPERIMENT STATION reports as follows on Douglas Fir planted in 1887: "Another valuable tree from the Rockies is the Douglas Fir. It stands well, its fresh green color during the winter. No Fir or Spruce takes on a more graceful form than this and none will likely retain their beauty for a longer time. The Douglas Fir is also the great Evergreen of Washington and Oregon."

MASS. AGRIC. COLLEGE—Mr. F. A. Waugh says of the Douglas Fir: "We find this tree to be entirely hardy and satisfactory in this state."

MR. CHAS. A. SCOTT, KANSAS STATE FORESTER, advises: "The Douglas Fir grows very successfully in Kansas, except in extreme western part of state, where Scotch Pine and Red Cedar do better."

D. HILL says: "In my estimation the Douglas Fir is one of the most important American native Evergreens, and is destined to become a leader for general planting. I have been growing and selling this tree ever since first introduced from Colorado, in increasing quantities each year, and I have yet to hear a complaint that it has not given satisfaction. It grows fast. It is hardy, has beautiful glaucous green foliage, grows thick and bushy—thrives on all soils and transplants readily. This tree never disappoints. It always gives satisfaction, and I highly recommend it to all my customers who want a thoroughly reliable windbreak or ornamental Evergreens."

Price, transplants	Each	10	100
10 to 12 inches.....	\$ 0.25	\$1.85	\$12.00
12 to 18 inches.....	.30	2.25	15.00
3 to 4 feet.....	.60	5.50	50.00
Seedlings		100	1000
4 to 6 inches, 2 yr.....	\$1.50	\$10.00	
8 to 10 inches, 4 yr.....	2.65	24.00	

AMERICAN WHITE SPRUCE

ONE OF THE LEADING NATIVE EVERGREENS. Destined to become "THE LEADER." Grows perfectly in all northern, eastern and middle-western states. Grows thick and compact. Retains its branches well to the ground. Foliage is light green with slightly blue tinge

Described by Bailey, the eminent Horticulturist, as "A native of the Northern parts of America, and justly thought to be one of our best Evergreens. A compact and upright grower of great longevity. Trees over fifty years old remain well branched at bottom, retain their pyramidal form, and annually make an upward growth. It will grow on a great variety of soils, bear crowding well and also stand severe trimming. A good tree for windbreaks and shelterbelts. Being a native of cold climates it grows most successfully planted north of a line from Philadelphia to St. Louis.

For successful windbreak planting its value cannot be overestimated. In northern cold climate where the thermometer often drops very low, it grows equally well or better than farther south. The White Spruce is steadily increasing in popularity. Grows to large size, often reaching 60 to 80 feet.

MAINE—The White Spruce does well in this state. Dept. of Forestry, Orono, Maine.

NEBRASKA—The White Spruce thrives very successfully. W. J. Morrill, Dept. of Forestry, Lincoln, Neb.

ONTARIO, CANADA—The White Spruce is entirely hardy and does well here. E. J. Zavitz, Ontario Agricultural College, Guelph, Ont., Canada.

ILLINOIS—A grand tree for this state. Agric. Exp. Station, Urbana, Ill.

MICHIGAN—Grows splendidly in Michigan. Mich. Agric. College, East Lansing, Mich.

WISCONSIN—Especially adapted to Wisconsin soil and climate, and grows to perfection. Fine for windbreaks. Agric. Exp. Station, Madison, Wis.

KANSAS—A fine Evergreen and grows well in Kansas, except in extreme western part. Kansas State Agric. College, Manhattan, Kan.

MINNESOTA—It is well known that the White Spruce does well anywhere in this state and when planted in rich soil and given good cultivation while small grows fast and bushy. Splendid for windbreaks. Dept. of Agric., Univ. of Minn., University Farm, St. Paul, Minn.

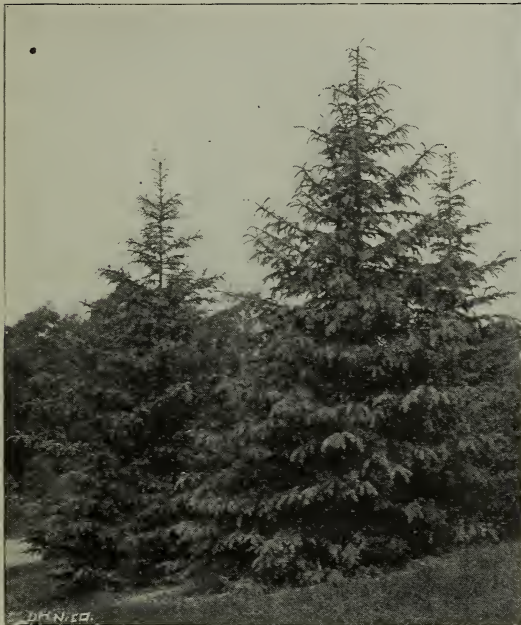
VERMONT—We have recommended the use of Norway Spruce, and this variety has done well, but on the whole I believe our native White Spruce is more satisfactory for Vermont. A. F. Hawes, State Forester, Burlington, Vt.

NORTH DAKOTA—The White Spruce does very well here, though it has not been extensively planted. C. B. Waldron, Agric. College, N. D.

IOWA—Its compact growth, glaucous foliage and pleasing outline, combined with its hardiness and durability, make it a valuable tree for the Iowa planter. Experiment Station, Ames, Iowa.

SOUTH DAKOTA—Very hardy and desirable. Withstands the cold climate and develops good specimens and a useful windbreak tree. Agric. Exp. Station, Brookings, S. D.

The White Spruce, says D. Hill, from the standpoint of hardiness and practical utility is unexcelled—especially in the most northern states, where other varieties might not do so well. I predict a great future for this variety. I believe that eventually it will be more widely planted than any other member of the Spruce family.



White Spruce

Price, transplants	Each	10	100
12 to 18 inches.....	\$0.25	\$1.50	\$12.00
18 to 24 inches.....	.35	2.50	18.00
Seedlings		100	1000
3 to 6 inches, 2 yr.....		\$1.75	\$12.00
6 to 8 inches, 3 yr.....		2.00	15.00



What your windbreak will look like a few months after planting. The next year it should be 3 or 4 feet high



Black Hill Spruce Windbreak in Iowa. It is an acknowledged fact that windbreaks conserve moisture and make bigger crops

Black Hill Spruce

A Valuable, Noteworthy Tree

This is a form of the White Spruce which has but recently been introduced into cultivation. It is a native of the Black Hills country of South Dakota and is proving to be an extremely valuable evergreen for the prairie planter. It possesses a well developed root system, is easily handled and is very hardy and quite resistant to drought and the drying influence of winter winds. It has already been planted to a considerable extent in some of the most trying sections of northern and western Iowa and for these sections has proved to be one of the most valuable evergreens for general planting. It is more easy to transplant and promises to occupy a prominent place in all future plantings. Botanically it is merely a variety of the White Spruce of the East, a modification probably due to environment.

In form it is more compact than the White Spruce and its foliage possesses less of the glaucous tinge and the needles are heavier and more prominent. It is not quite as rapid a grower while young as the true White Spruce.

The Black Hills Spruce as a tree for shelter-belts and commercial planting deserves a high rating and in a comparatively short period of time has made a definite place for itself in the commercial list. In the territory from Cherokee west and on the Missouri River bluffs it is one of the most successful evergreens.

Even the little fellows are stocky and compact. For ornamental plantings its attractive foliage makes it extremely valuable for park and lawn planting, which in addition to its longevity and ease of culture surely entitles it to a position among the leaders. For windbreak purposes it is unsurpassed and is well adapted for prairie planting, in the states of South Dakota, Minnesota, Nebraska, Kansas, etc., and when planted in rich soil with favorable weather conditions its growth is wonderfully strong, rugged and luxurious. Seldom if ever has a new variety sprung so quickly into favor and popularity as the Black Hill Spruce. Its many sterling qualities proclaim it preeminently the tree of the future. It grows to large size, finally reaching a height of 75 to 100 feet. Moderately fast grower.

SOUTH DAKOTA—The Black Hill Spruce has no superior for hardiness and utility, valuable for windbreaks and all farm plantings. Grows compact, uniform, uninjured by drouths, transplants readily, and deserves of being largely planted.—Agricultural Experiment Station, Brookings, S. D.

IOWA—A valuable tree for Iowa.—A. T. Irwin, Department of Horticulture, Ames, Ia.

MINNESOTA—A most valuable tree and succeeds well anywhere in the state.—E. G. Cheyney, University Farm, St. Paul, Minn.

Price, transplants	Each	10	100
10 to 12 inches.....	\$0.20	\$1.75	\$12.00
12 to 18 inches.....	.30	2.00	15.00
18 to 24 inches.....	.45	3.50	25.00
2½ to 3 feet, B. & B.....	2.25	21.00
3 to 4 feet, B. & B.....	3.75	32.50
4 to 5 feet, B. & B.....	5.25	48.75
Seedlings		100	1,000
3 to 6 inches, 2 years.....		\$1.85	\$15.00
6 to 8 inches, 4 years.....		2.25	18.00



Black Hill Spruce

Scotch Pine

**A Great Tree for Windbreaks
Excellent for the West and Northwest**

As the name indicates this Evergreen is a native of Europe and Asia. In some states, notably Iowa, it is the most widely planted Evergreen today, and because of its hardiness and rapidity of growth has proved of much value in giving quick protection, which was so much needed about homes and farms in treeless regions. This variety is rather attractive in form and possesses a splendid root system. In the hands of the amateur it is perhaps the easiest of all Evergreens to transplant, and the rapid growth it makes from the very start gives it a combination of desirable qualities for the planter. This variety grows well on almost any soils and is not affected by drying winds or hot sun.

OHIO—The Scotch Pine stands heavy soils and seems to grow well throughout the state.—Ohio Agricultural Experiment Station, Wooster, Ohio.

IOWA—The Scotch Pine and Norway Spruce are probably the most widely planted varieties in this state, primarily because easy to handle and fast growers.—Iowa State Agricultural College, Ames, Iowa.

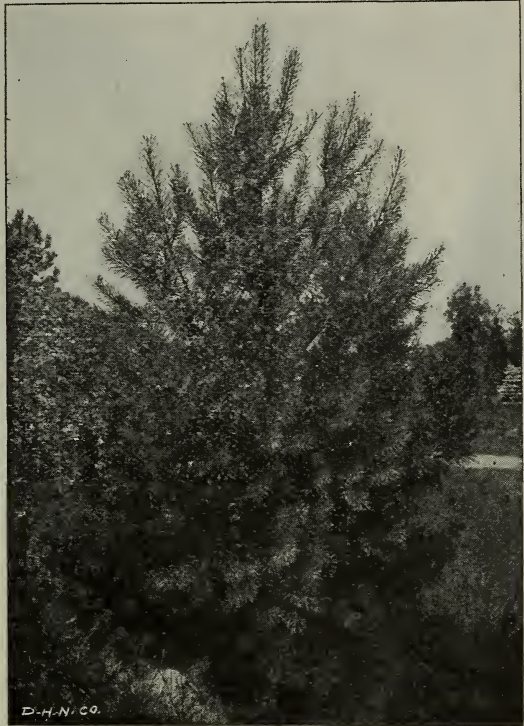
KANSAS—The Scotch Pine has the ability to endure long continued heat and drouth and grows well all over the state.—J. W. Riggs, Experiment Grounds, Waterloo, Kansas.

MASSACHUSETTS—Scotch Pine is entirely hardy and satisfactory here.—F. A. Waugh, Massachusetts Agricultural College, Amherst, Mass.

OKLAHOMA—The Evergreens that have given best satisfaction with us are the Scotch, Austrian and White Pines and Red Cedar.—W. O. Booth, Horticulturist, Oklahoma Agricultural Experiment Station, Stillwater, Okla.

NEBRASKA—The Scotch Pine thrives splendidly in eastern Nebraska and the Sand Hills.—Department of Forestry, Lincoln, Nebr.

MINNESOTA—The Scotch Pine does well here.—University Farm, St. Paul, Minn.



Scotch Pine

	Each	10	100
12 to 18 inches.....	\$0.20	\$1.00	\$ 6.00
18 to 24 inches.....	.25	1.50	8.00
2 to 3 feet.....	.40	3.00	12.00
3 to 4 feet.....	.50	4.00	20.00
Seedlings		100	1000
3 to 6 inches.....	\$1.00	\$5.00	
6 to 12 inches.....	1.50	8.00	



View showing part of one block of Scotch Pine in Hill Nursery. These trees are 4 and 5 years old, twice transplanted and twice root pruned. Notice the thrifty growth



Jack Pine, used as windbreak and timber stock. Grows fast and stands well long-continued drouths

JACK PINE

Exceptionally Fast Grower—Hardy. Thrives on the Poorest of Soils. Endures Extremes of Heat and Cold. Very Desirable for Windbreaks, Groves, Shelterbelts and Screens. Succeeds where Other Varieties Fail.

Prof. G. B. Green says: "This tree under favorable circumstances will occasionally attain a height of 125 feet, with a diameter of 12 inches. It makes a tremendous growth while young. A single acre will yield 40 to 50 cords of wood and a great deal of farming timber besides." The growth and success of this variety when planted on the sand hills of Nebraska is phenomenal. For quick windbreaks on poor soil in the states of Minnesota, Michigan, Indiana, Illinois, Wisconsin, Iowa, Nebraska, Kansas, Oklahoma, it is unexcelled. Windbreaks and groves planted near Brookings, S. D., in 1898 have done exceedingly well and are very vigorous and thrifty.

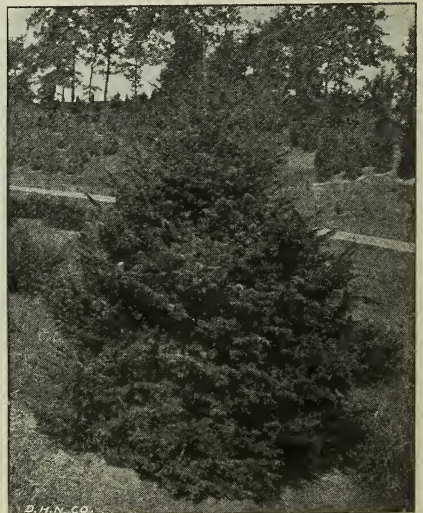
D. Hill says: "This variety is just coming into its own. It is being planted in increasing quantity each year. Its uses are many, most important being its adaptability to poor soils. I have seen windbreaks of Jack Pine in Minnesota, Michigan, Nebraska and South Dakota that were simply splendid. If you live in a hot, dry climate with rather sandy soil, plant Jack Pine. You will not be disappointed."

Price, transplants	Each	10	100
10 to 12 inch.....	\$0.15	\$1.10	\$ 4.00
2 to 3 feet.....	.25	1.50	8.00
3 to 4 feet.....	.30	2.00	12.00
Seedlings		100	1000
3 to 6 inches.....		\$1.50	\$ 4.50
6 to 10 inches.....		1.75	6.00
10 to 18 inches.....		2.00	10.00

BALSAM FIR

Thrives in moist soils. A good variety for the North and Eastern states. It is tall, straight growing, with dark green foliage. An admirable tree for planting in some locations. It is quite hardy except with severe north exposure. It is very popular as an ornamental. The needles emit a pleasing fir odor. A good use for the Balsam Fir is to plant a tree here and there in your windbreak or grove, as it thrives well when grown with other trees.

Price, transplants	Each	10	100
10 to 12 inch.....	\$0.25	\$ 1.50	\$ 9.00
12 to 18 inch.....	.30	2.25	12.00



Balsam Fir



White and Austrian Pines used in this windbreak. Four rows with trees planted 8x10 feet apart, breaking joints. This Hill Evergreen Windbreak is only a few years old but already it gives good protection.

AUSTRIAN PINE

This valuable tree, although of comparatively recent introduction, has gradually worked its way into public favor, until at present time it is well-known and widely planted. Its strong, massive branches impart an air of sturdiness, making it a favorite for windbreak and also ornamental planting. The foliage is remarkably beautiful and its color is a richer and darker green than any of the pines. On account of its rapidity of growth and absolute hardiness it is extremely valuable for windbreaks, shelter-belts and screens.

IOWA.—This variety is extensively planted here and invariably gives good results. Fully as hardy as the Scotch Pine and lives just as long. It possesses a heavy, dark green foliage and is considered a superior variety for windbreaks. It is rapid in growth.

	Each	10	100
10 to 12 inches.....	\$0.20	\$ 1.60	\$ 9.00
12 to 18 inches.....	.30	2.50	15.00
1½ to 2 feet, B&B.....	1.35	12.50
2 to 2½ feet, B&B.....	1.60	15.00
2½ to 3 feet, B&B.....	2.00	18.50
Seedlings		100	1000
3 to 5 inches, 2 yr.....		\$1.00	\$6.00
4 to 8 inches, 3 yr.....		1.50	7.50

PONDEROSA PINE

A Time-Tested, Hardy, Valuable Variety

A fine, hardy species from the Rocky Mountains and Black Hills of South Dakota. Of inestimable value for planting in states of Nebraska, Kansas, Missouri, Oklahoma, Minnesota and the Dakotas.

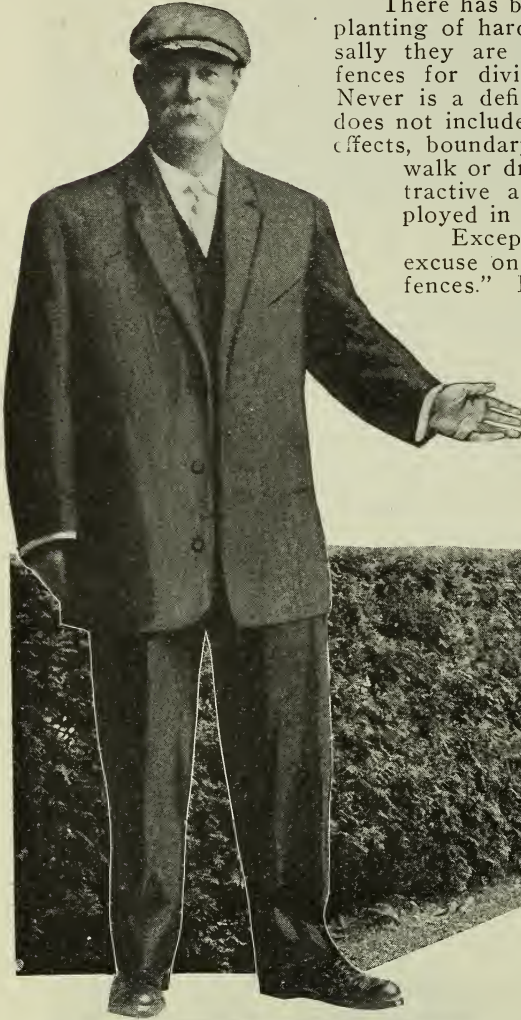
A prominent Horticulturist in South Dakota writes about Ponderosa Pine as follows: "I have a row of this on the top of a hill, now averaging about twenty feet high, straight and thrifty as a pine should grow. Never have they showed a dead limb or lost their leader. The color is a light green the year around. If you think it too much work to cultivate or even break the ground, just stick it out on the sod, and if it starts the first season, it will come on and make a good, thrifty tree, showing that it does not mind droughty spells or sod bound sites like most other evergreens. Like all pines, it requires plenty of room and sunlight. Running its roots far and deep, it must be handled right in the nursery to transplant well. The Ponderosa is the only pine found in the Black Hills and Nebraska, where it occupies the dry table lands in the north-western portion.



Ponderosa Pine, valuable for windbreaks and shelterbelts on account of its drought-resistant qualities, strong, upright, thrifty growth and ornamental foliage.

	Each	10	100
6 to 12 inches.....	\$0.25	\$2.00	\$15.00
Seedlings		100	1000
3 to 5 inches.....	\$1.25	\$9.00	

Hill's Evergreens For Hedges



There has been a remarkable revival of interest in the planting of hardy Evergreen hedges, and almost universally they are replacing the unsightly board and wire fences for dividing lines, walk and driveway borders. Never is a definite scheme of planting carried out that does not include the use of hedges, either for ornamental effects, boundary line, shelter, live fences, or simply for walk or driveway border. Their use is the most attractive and economical method that can be employed in ornamenting the home grounds.

Except for temporary purposes there is little excuse on farms or lawns for any other than "live fences." For dividing fields, along roads and lanes, around the home, and for a dozen other purposes, evergreen hedge trees can be used to better advantage than wire or wood.

I have experimented with different varieties of Evergreen hedges for many years, I have tested their growth and watched their behavior in all parts of the country, so that I can

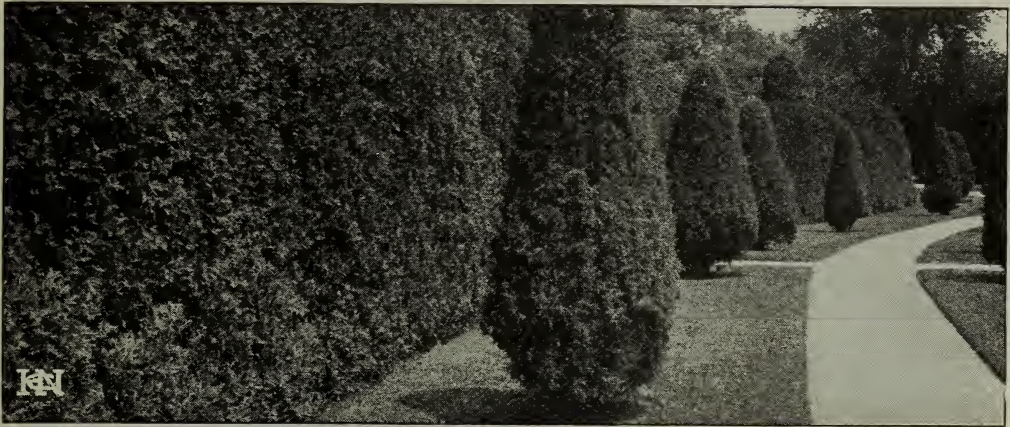
AMERICAN
ARBOR VITAE

The National Hedge
of America

truthfully state that the three varieties offered here contain all those qualities which a good Evergreen hedge plant must have to give satisfaction. First.—A hedge plant must be **HARDY**—not kill out in severe winter weather. Second.—They must stand trimming and pruning. Third.—They must have thick, strong, well-colored foliage. I highly recommend these varieties as I know they will give satisfaction. The American Arbor Vitae maintains itself as "the leader," and it surely deserves its popularity, for everywhere it is coming to be known as "the National Hedge" of America. Norway Spruce comes next, and then Hemlock, and both are splendid.

The proper distance apart to plant trees is governed by the size, but trees up to three feet should best be planted from 12 to 15 inches apart, depending upon whether or not immediate results are desired. In ordinary Hedge planting it is always best to order a few extra to fill in should some die.

Trimming should not be started until the hedge is well established, usually after the first year.



Arbor Vitae will stand any amount of shearing, have beautiful foliage, hence make perfect hedges

AMERICAN ARBOR VITÆ

The National Hedge of America

Hardy

Trims Well

Good Foliage

Of all Hardy Evergreen hedge plants, the American Arbor Vitae is without a rival and is a general favorite everywhere.

Owing to its compact appearance when sheared and its bright green color, it is without doubt the best tree for hedge purpose that grows. Being perfectly hardy and of comparatively rapid growth, it forms a beautiful compact hedge in a remarkably short time. It is preeminently a tree without an equal for practical utility and ornamental value. There is not a lawn, no matter of what proportion, where an Arbor Vitae hedge would not enhance its beauty to a high degree, and serve at the same time as dividing lines, walk borders, or screen, etc.

No matter where you live it will give you perfect satisfaction. It is absolutely the finest hedge plant in the world.

Price, transplants				Price, transplants					
Each	10	100	1,000	Each	10	100	1,000		
6 to 12 inch....	\$0.15	\$1.00	\$4.00	\$35.00	18 to 24 inch..	\$0.25	\$2.00	\$ 9.00	\$ 85.00
12 to 18 inch....	.20	1.50	5.00	45.00	2 to 3 feet....	.30	2.50	12.00	100.00

NORWAY SPRUCE

Probably the most practical hedge evergreen for long stretches of heavy wall, for field divisions, etc. Quickly gets large and effective and remains in good condition for scores of years.

Price, transplants				Price, transplants			
Each	10	100	1,000	Each	10	100	1,000
10 to 12 inches.....	\$0.15	\$1.00	\$4.50	18 to 24 inches.....	\$0.25	\$2.00	\$12.00
12 to 18 inches.....	.20	1.50	6.00	2 to 3 feet30	3.00	18.00

HEMLOCK

Price, transplants			
Each	10	100	1,000
6 to 10 inches.....	\$0.15	\$1.50	\$12.00
10 to 12 inches.....	.25	2.00	15.00
12 to 15 inches.....	.30	2.50	22.50



American Arbor Vitae is the National Evergreen Hedge of America



American Elms are beautiful trees for street planting

Deciduous Trees

This department includes trees of varieties which drop their leaves in winter. Their uses are manifold, the more important being the beautification of landscape, shade and shelter. No garden or landscape is complete without them. Plant a few of these on your lawn, dooryard, or treebank, and you will be surprised how they will increase the value and beautify your property. The trees offered below are all select, straight specimens and fully uphold the reputation of all "Hill Grown" stock.



American Elm

AMERICAN WHITE ELM

**A Good Shade Tree
Fine for Treebank, Park and
Boulevard Planting**

Probably the most picturesque of all shade trees. The branches are thickly covered with leaves, but stand wide apart at the tops, making vase-like trees. In a few years Elms get quite high, and eventually they reach fully a hundred feet. A characteristic is that each tree is composed of two, three or four main trunks, branching from the common roots, near the surface of the ground. Not all of the trees grow in this way, but most of them do, and those to whom Elms are a familiar sight come to look for the outcurving trunks as part of the landscape, a landmark, a distinguishing point of a homestead. The trees get finest in the shortest time when growing in moist loam, but they will grow anywhere.

Price, transplants	Each	10	100
3 to 4 feet.....	\$0.20	\$1.50	\$4.50
4 to 6 feet.....	.30	2.25	6.00
10 to 12 feet, 1½-2 inches diameter.....	1.00	8.00	75.00
10 to 12 feet, 2-2½ inches diameter.....	1.75	15.00	125.00
12 to 14 feet, 2½-3 inches diameter.....	2.25	20.00	175.00



Maple trees in Nursery; notice how straight and clean and how well trimmed



Norway Maple

NORWAY MAPLE

For general use the finest shade tree in the world. We have yet to find a place where Norway Maples will not thrive, or to find any other tree so satisfactory in growth with such handsome foliage, such splendid rugged frame and trunk. In the nursery these Maples begin to form a round head above a straight, smooth trunk, and as they grow older, the head becomes denser and rounder, and the limbs and trunk straight and strong. The branches grow straight horizontally, and the leaves are broad and very green.

They grow fast, their shape is graceful when they are little and when they are old, their foliage is beautiful, and they are thoroughly dependable in all situations. Once established, Maples are good for two hundred years of the finest kind of shade.

Price, transplants	Each	10	100
5 to 6 feet.....	\$0.50	\$4.50	\$35.00
8 to 10 feet.....	1.00	8.00	60.00
		Each	10
10 to 12 feet, 1½-2 in. diameter.....		\$2.00	\$18.00
12 to 14 feet, 2-2½ in. diameter.....		2.65	24.75
12 to 14 feet, 2½-3 in. diameter.....		3.35	30.00
14 to 16 feet, 3-4 in. diameter.....		4.25	40.00

SCHWEDLER'S PURPLE LEAF MAPLE

Not quite so regular as the Norway, but has foliage of a bright, light green in early spring. This changes through the summer and fall, first to purplish, which it holds for weeks, and then to gold and red.

Price, transplants	Each	10
6 to 8 feet.....	\$1.25	\$10.00
10 to 12 feet, 2-2½ in. diameter.....	4.00	37.50
12 to 14 feet, 2½-3 in. diameter.....	5.00	45.00



Norway Maples and Arbor Vitae Hedge. Don't you wish you had them?

Poplars

Poplars are more easily and quickly grown than almost any other tree, and thrive in nearly all soils. Their leaves are bright and their tops thin, fitting them for numberless purposes.

CAROLINA POPLAR

An extremely rapid grower, and desirable where quick shade is wanted. It seemingly thrives just as well on poor soil as it does on rich, and grows into a fine-shaped spreading tree. Showy and cheery from the constant movement of its glossy, silver-lined leaves, yet always casting a dense, cool shade. Much used for subdivision planting, being of quick growth, commendable and economical.

Price, transplants	Each	10	100
2 to 3 feet.....	\$0.08	\$0.50	\$ 2.50
3 to 5 feet.....	.10	.75	4.00
8 to 10 feet.....	.30	2.50	15.00
10 to 12 ft., 1-1½ in. diameter40	3.00	25.00
12 to 14 ft., 1½-2 in. diameter50	4.00	30.00
12 to 14 ft., heavy, 2-2½ in. diameter.	.50	4.50	40.00

LOMBARDY POPLAR

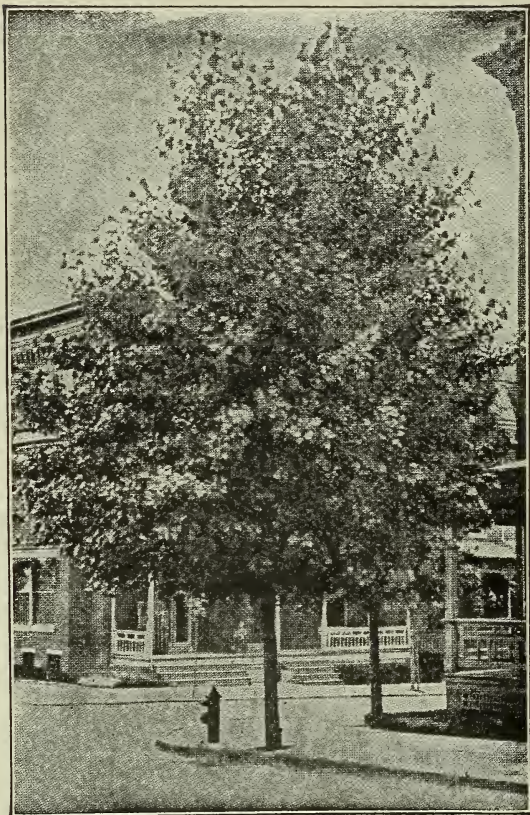
Of obelisk or pyramidal form, growing rapidly to 150 feet tall. Much used in Italian formal gardens. Always makes a striking feature in any landscape.

Price, transplants	Each	10	100
6 to 8 feet.....	\$0.50	\$4.50	

NORWAY POPLAR

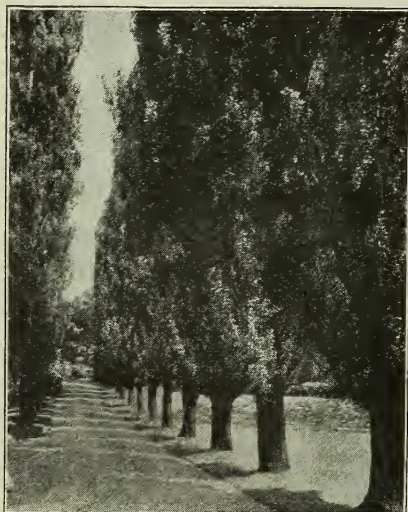
Sometimes called sudden sawlog. Very popular and a quick growing, valuable timber tree.

Price, transplants	Each	10	100
6 to 8 feet	\$0.20	\$1.50	\$12.00



Carolina Poplar

Dear Sir: I received the trees last week, and am well pleased with them. They were in fine condition when they arrived. Yours truly.—Wm. Younghans, Gothenburg, Nebr.



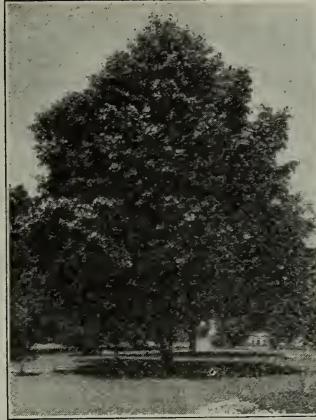
Lombardy Poplars along drive



Carolina Poplars along drive



Weeping Birch



American Linden



Tea's Weeping Mulberry

CUT-LEAVED WEEPING BIRCH

This is the favorite of all trees for lawn and cemetery planting. Its graceful, drooping branches and delicate leaves, together with its bark, so characteristic of the Birches, all combine to make it the most popular tree grown. It should be on every lawn. Its picturesque trunk, clothed with paper bark, is very ornamental, and when contrasted against Evergreens the effect is greatly intensified. It grows rapidly and is planted everywhere successfully.

Price, transplants Each
 5 to 6 feet.....\$1.00

WHITE BIRCH

This tree is a rapid grower with beautiful spray-like branches. The white paper-like bark is especially attractive when planted among Evergreens, the bark being smooth and of a creamy or ivory whiteness. It grows to be a large tree 60 feet high.

Price, transplants Each
 6 to 8 feet.....\$0.75

AMERICAN LINDEN

We make a specialty of this marvelous tree, as it is one of the handsomest native trees we have. Its large leaves and beautiful blossoms, together with its dense foliage and spreading habit of growth, make it valuable as a lawn tree as well as for street and avenue planting. The Linden grows fast, forming shapely trees and casting a dense, cool shade. (See illustration.)

Price, transplants Each
 3 to 3½ inches diameter.....\$3.35 10 \$30.00
 3½ to 4 inches diameter..... 3.50 32.50

CATALPA BUNGEI

The illustration gives a better idea of what this wonderful tree is than any description we could give. Of Chinese origin. The tops are grafted on straight stems, forming pretty dome-shaped head of great soft, heavy leaves. To get best effect plant along both sides of a driveway. The demand for these trees has been growing by leaps and bounds and they are now planted all over the country, except in some extremely cold parts. It does not become scraggy but keeps its round-headed, straight-bodied appearance always. Single specimens planted on lawns attract great attention. If you really want something out of the ordinary, and different from anything your neighbor has, you ought to have Catalpa Bungei.

Price, transplants Each
 2 yr. heads, 5 to 6-foot stems.....\$1.25

TEA'S WEEPING MULBERRY

The most beautiful weeping tree ever introduced. The slender branches grow downward, parallel with the stem, forming an umbrella-like shape and a dense canopy which can be used as a playhouse for the children. Grafted on a straight stem 6 to 8 feet high its branches sweep the ground, forming a beautiful tent of green. The foliage of this attractive tree is both graceful and beautiful. The most popular arrangement for planting is to place one or each side of the walk leading to the house. One or more of these trees should be on every lawn. (See illustration.)

Price, transplants Each
 2 yr. heads\$1.25



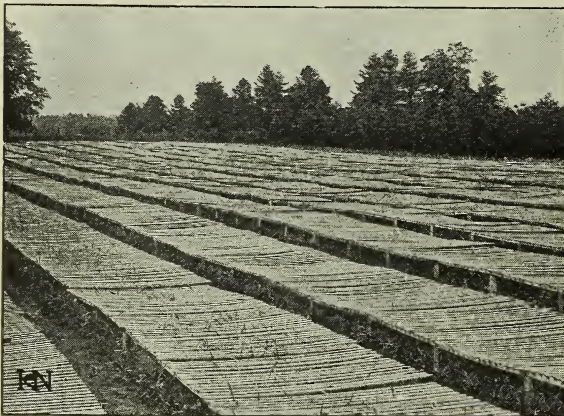
Catalpa Bungei



Oak seedlings in the Hill Nursery

HILL'S EVERGREEN AND DECIDUOUS FOREST TREE SEEDLINGS

Owing to the widespread interest in forestry and wood-lot planting and the enormously increased demand for valuable native forest species, our facilities for producing forest-tree seedlings have increased from year to year until now our annual output consists of many millions of plants. Not only are the large lumber and railroad companies planting on a large scale, but farmers and land-owners all over the country are rapidly beginning to realize that the establishing of wood-lots or shelter-belts is just as important as the raising of staple crops, and the profits larger and surer. The prevailing opinion that you have to wait generations for returns is false. Many plantations planted six and eight years ago are already a source of big revenue to their owners, and growing more valuable each year, and cases are on record where groves of five years' standing have produced fence posts in quantity sufficient to liquidate the original investment many times over, and then the grove was only thinned out here and there. Nor does it entail any great expenditure of money to establish a woodlot or grove of say one acre in extent. By planting the seedlings 6x6 feet apart each way, 1,210 trees will be required. The planting can be accomplished economically. From data gathered from reliable sources we find that the average man can plant 1,000 trees per day, where the ground is in good condition and the soil prepared as for corn and marked out, and where the land is rougher and harder to work, 500 to 900 trees per day would be the average. Their care after planting is a small item, requiring only frequent cultivation same as corn for the first few seasons.



How Evergreen seedlings are shaded

FOUR QUICK GROWERS

CATALPA SPECIOSA

Price, seedlings	100	1,000
6 to 12 inch.....	\$1.00	\$3.00
12 to 18 inch.....	1.25	5.00
18 to 24 inch.....	1.35	6.00

BLACK LOCUST

Price, seedlings	100	1,000
6 to 12 inch, 1 year....	\$1.00	\$2.50
12 to 18 inch, 1 year....	1.00	3.50
18 to 24 inch, 1 year....	1.00	4.50

WHITE ASH

Price, seedlings	100	1,000
6 to 12 inch, 1 year....	\$1.00	\$4.50
12 to 18 inch, 1 year....	1.50	6.00

SOFT MAPLE

Price, seedlings	100	1,000
6 to 12 inch.....	\$0.75	\$2.00
12 to 18 inch.....	1.00	2.50
18 to 24 inch.....	1.25	3.00

EIGHT VALUABLE VARIETIES

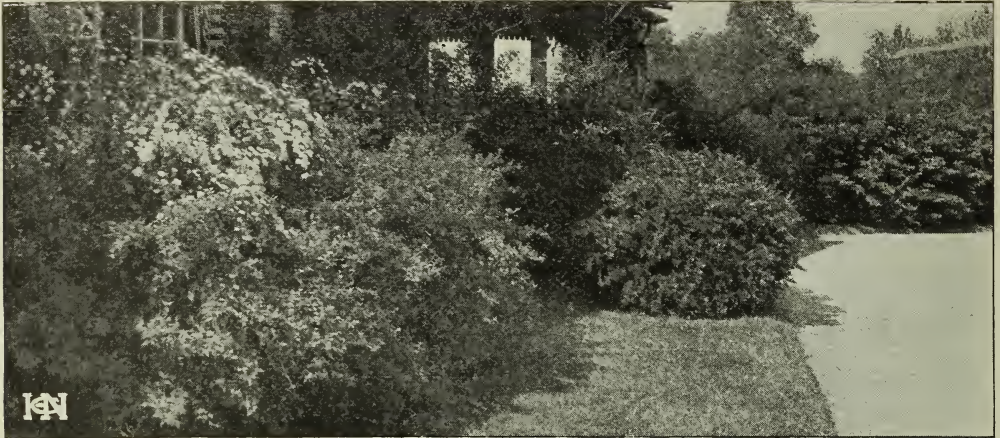
HARD MAPLE		AMERICAN LINDEN			
Price, seedlings	100	1000	Price, seedlings	100	1000
4 to 8 inch, 1 yr.....	\$1.00	\$8.00	6 to 12 inch, 1 yr.....	\$2.25	\$15.00
RED OAK		EUROPEAN LARCH			
Price, seedlings	100	1000	Price, seedlings	100	1000
6 to 12 inch, 2 yr.....	\$1.00	\$5.00	6 to 10 inch, 2 yr.....	\$1.50	\$6.75
BURR OAK		BLACK WALNUT			
Price, seedlings	100	1000	Price, seedlings	100	1000
6 to 12 inch, 2 yr.....	\$1.50	\$6.00	6 to 12 inch, 1 yr.....	\$1.50	\$9.00
12 to 18 inch, 2 yr.....	1.75	7.00	EUROPEAN LINDEN		
AMERICAN ELM		EUROPEAN LINDEN			
Price, seedlings	100	1000	Price, seedlings	100	1000
6 to 12 inch.....	\$0.75	\$2.50	6 to 12 inch, 2 yr.....	\$1.00	\$6.00
12 to 18 inch.....	1.00	3.50			

EVERGREEN SEEDLINGS

WHITE PINE		JACK PINE			
Price, seedlings	100	1000	Price, seedlings	100	1000
3 to 6 inch, 2 yr.....	\$1.50	\$6.00	3 to 6 inch, 2 yr.....	\$1.50	\$ 4.50
SCOTCH PINE		PONDEROSA PINE			
Price, seedlings	100	1000	Price, seedlings	100	1000
3 to 6 inch, 2 yr.....	\$1.00	\$5.00	3 to 5 inch.....	\$1.25	\$9.00
6 to 12 inch, 3 yr.....	1.50	8.00	COLORADO BLUE SPRUCE		
NORWAY SPRUCE		CONCOLOR FIR			
Price, seedlings	100	1000	Price, seedlings	100	1000
3 to 4 inch, 2 yr.....	\$1.00	\$3.50	3 to 4 inch, 2 yr.....	\$2.00	\$12.00
4 to 8 inch, 2 yr.....	1.50	5.00	AUSTRIAN PINE		
8 to 10 inch, 3 yr.....	1.65	6.00	Price, seedlings	100	1000
BLACK HILL SPRUCE		FLEXILIS PINE			
Price, seedlings	100	1000	Price, seedlings	100	1000
3 to 6 inch, 2 yr.....	\$1.85	\$15.00	3 to 5 inch, 2 yr.....	\$1.50	\$9.00
AUSTRIAN PINE					
Price, seedlings	100	1000			
3 to 5 inch, 2 yr.....	\$1.00	\$6.00			
4 to 8 inch, 3 yr.....	1.50	7.50			



Evergreen Seedling Beds. European Larch at left; Scotch Pine in center
One year White Pine under racks at right



Group your shrubs like this and they will show splendidly

HILL'S ORNAMENTAL FLOWERING SHRUBS

Whether your space is limited to a small yard or is a lawn of many acres, shrubs are indispensable. If you select your shrubs with care, you will get a succession of bloom from early spring till frost comes in the fall, together with beautiful color and form in the foliage and bright berries.

It is our aim to produce everything in Flowering Shrubbery that is useful, hardy and worthy of general cultivation in our climate. We provide conditions which produce the highest quality in shrubs, which are grown with plenty of room to develop an abundance of fibrous roots, and large, strong, healthy tops. In planting shrubs, prepare the ground as for a crop of potatoes, and keep it either cultivated or mulched. In groups, plant about four feet apart.



White Snowball

BEAUTIFUL, WHITE, DOUBLE-FLOWERING SNOWBALL. (Viburnum Opulus Sterile.)

A charming shrub. Bears great clusters of pure white flowers like real snowballs. Covered with bloom for weeks in the spring. Grows 5 to 7 feet tall. Has rich, dark green foliage.

Price	Each	10	100
2 to 3 feet.....	\$0.25	\$2.00	\$18.00

HIGHBUSH CRANBERRY (Viburnum Opulus).

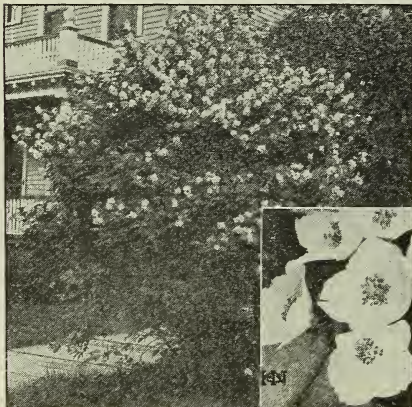
A shrub with beautiful white flowers which hang in clusters in late spring and early summer, followed by scarlet berries remaining all winter; 10 to 12 feet tall.

Price	Each	10	100
2 to 3 feet.....	\$0.30	\$2.50	\$20.00

WAYFARING TREE (Viburnum Lantana)

White flowers followed by berries that become pink, red and black in turn as they ripen; 20 feet high; an unusual shrub, but very handsome.

Price	Each	10	100
2 to 3 feet.....	\$0.30	\$2.50	\$20.00
3 to 4 feet.....	.35	3.00



Weigelia

SPIREA VAN HOUTTEI

Sometimes called Bridal Wreath

Five to six feet high. Van Houttei's Bridal Wreath. A grand, graceful shrub, entirely hardy and one of the most beautiful of all. Immense bloomer, pure snow-white flowers borne in elegant plume-shaped clusters all over the plant as shown in illustration. Recommended for all kinds of outdoor planting; also excellent for hedge.

Price	Each	10	100
2 to 3 feet.....	\$0.30	\$2.50	\$20.00
3 to 4 feet.....	.35	3.00	25.00

THE BEAUTIFUL "SNOWBERRY"

(Symphoricarpos Alba.) This beautiful shrub is literally covered with pure white berries in the late summer and fall. Grows 4 to 6 feet high, blooming in July and August. See illustration.

Price	Each	3	10
2 to 3 feet.....	\$0.25	\$0.65	\$2.00

WEIGELIAS

In June they produce large, superb trumpet-shaped flowers of all shades and colors from pure white to red. They make broad, vigorous growth. Five to eight feet in height.

THE BEAUTIFUL ROSE-COLORED WEIGELIA. (Weigelia Rosea.) Elegant shrub with fine rose-colored flowers.

Price	Each	3	10
2 to 3 feet.....	\$0.30	\$0.80	\$2.50

EVA RATHKE. Handsomest yet produced. Flowers purplish red with creamy white markings.

Price	Each	3	10
2 to 3 feet.....	\$0.30	\$0.80	\$2.50

CORAL BERRY OR INDIAN CURRANT

Has big lustrous red berries adhering all winter.

Price	Each	10	100
18 to 24 inch.....	\$0.25	\$2.00	\$18.00
2 to 3 feet.....	.30	2.50	20.00



Snowberry



Spiraea Van Houttei



Japanese Barberry

Hydrangea paniculata grandiflora

The Popular Garden Shrub

This is undoubtedly the grandest and most beautiful of all the hardy-flowering shrubs for the door-yard and lawn. The illustration herewith gives some idea of its magnificent beauty. We guarantee our Hydrangeas to give abundance of bloom the first season. The flowers are rich creamy white, changing to pink and borne in immense clusters. It blooms in August, the first and every succeeding year, and continues to bloom for months. It is entirely hardy, no trouble to grow, and does well anywhere.

Price,	Each	3	10
1½ to 2 feet.....	\$0.25	\$0.65	\$2.00
2 to 3 feet.....	.35	.95	3.00
3 to 4 feet.....	.40	1.00	3.50

JAPANESE BARBERRY

Berberis Thumbergii

One of the most beautiful shrubs in cultivation, either for hedging or general purposes. The plant is literally covered with bright scarlet berries in the fall. Grows 4 feet tall.

Price,	Each	10	100
12 to 18 inch.....	\$0.25	\$1.50	\$10.00
18 to 24 inch.....	.30	1.85	15.00

PURPLE BARBERRY

Berberis Purpurea

Equally remarkable for its brilliant purple foliage and fruit. Valuable as a border, hedge, or as single specimens.

Price,	Each	10	100
2 to 3 feet.....	\$0.20	\$1.25	\$10.00
3 to 4 feet.....	.25	1.50	12.00

LILACS (Syringa)

The fragrance of the Lilacs comes with the first breath of spring, and they bear great clusters of blue and white flowers.

OLD FASHIONED PURPLE LILAC

(*Syringa Vulgaris*)

Price,	Each	10	100
2 to 3 feet.....	\$0.30	\$2.50	\$20.00

PERSIAN LILAC

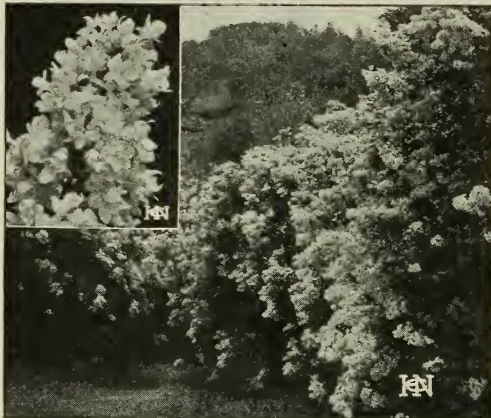
Pale Lilac Flowers

Price,	Each	10	100
2 to 3 feet.....	\$0.35	\$3.00	\$25.00
3 to 4 feet.....	.45	4.00	30.00

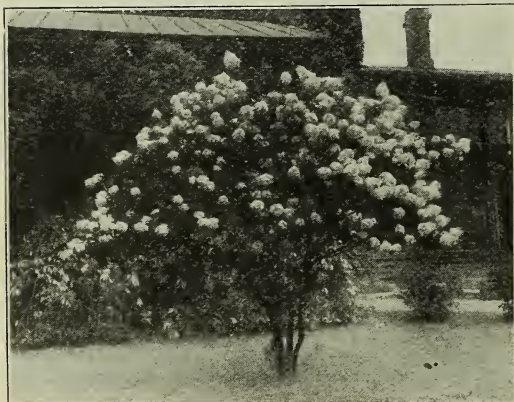
WHITE LILAC

(*Syringa Vulgaris Alba*) Fragrant

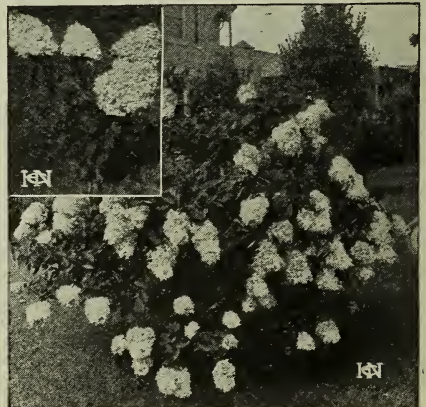
Price,	Each	10	100
2 to 3 feet.....	\$0.30	\$2.50	\$20.00



The old white lilac



Hydrangea Paniculata Grandiflora Trimmed Upright



Hydrangea Paniculata Grandiflora Bush Form

HARDY VINES

Indispensable near the house. Plant Clematis, Climbing Roses and Honeysuckle about the porches, with perhaps a vine or two of the Chinese Wistaria to climb as high as the roof, and others if you have space. Stone or brick walls are always prettier when Ivy-clad.

CLEMATIS PANICULATA. Of very rapid growth, covering trellises and arbors with handsome, clean, glossy foliage, of a healthy green. Flowers are small, pure white, borne in immense sheets, almost completely hiding the foliage, and have a most delicate fragrance. Blooms in September.

Each 3 10

2-yr., No. 1, Extra-select \$0.35 \$0.95 \$3.00

CLEMATIS JACKMANI. Strong, healthy growth, hardy nature; large, rich, deep, velvety purple flower.

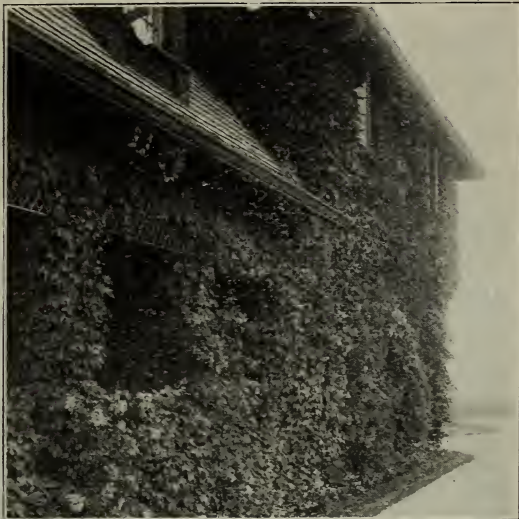
Each 3 10

2-yr., No. 1, Strong plants \$0.40 \$1.10 \$3.50

JAPAN, or BOSTON IVY (Ampelopsis Veitchii). Grandest of hardy climbing vines for covering houses, churches, schools, etc. Its glossy leaves overlap each other, and its long, delicate young shoots stretch up the walls with free, rapid growth.

Each 3 10

2-yr., No. 1, Selected vines \$0.30 \$0.80 \$2.50



Vine-covered porches are cool in summer

PURPLE CHINESE WISTARIA. Rapid-growing vine with handsome foliage and flowers. The pea-shaped purplish flowers are profusely borne in immense drooping clusters 7 to 12 inches long.

Each 3 10

2-year, No. 1.....\$0.35 \$0.95 \$3.00

HALL'S JAPAN HONEYSUCKLE. Nearly evergreen, its foliage remaining green nearly all winter. Beautiful yellowish white flowers so deliciously fragrant as to be noticed for a long distance.

Each 3 10

2-year, Selected plants..\$0.30 \$0.80 \$2.50

BITTERSWEET VINE.

Each 3 10

3-year, 2 to 3 feet...\$0.25 \$0.65 \$2.00

Hill's Special Vine Collection

One each of the above superior Climbing Vines, extra-selected plants, six in all, price, \$1.75.

HILL'S HERBACEOUS PEONIES

The Peony is unquestionably the finest herbaceous perennial in the world; it rivals the rose and when you look at a good double one it is hard to see much difference.

Festiva maxima. Acknowledged to be the best white Peony in existence. Of the purest white, splashed with a few streaks of crimson in the center.

Each 3 10

Large, strong roots..\$0.50 \$1.35 \$4.25

Rubra superba. Large, late, vigorous, sometimes called Red Festiva Maxima. Its bright red, double blossoms are gorgeous and make a delightful contrast to the pure white of Festiva Maxima.

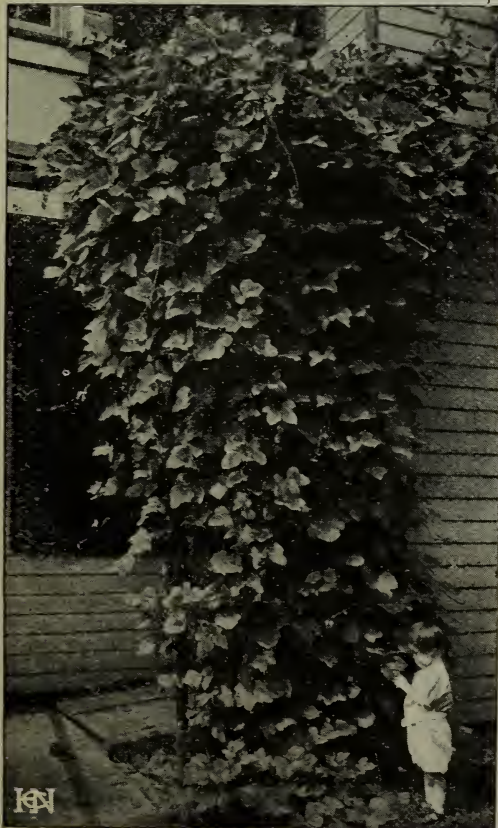
Each 3 10

Large, strong roots..\$0.40 \$1.00 \$3.25

Pink grandiflora. Immense, heavy blossoms of deep rose-pink, very fragrant. One of the showiest and most beautiful pink varieties in existence. Also very pretty in bud. Blossoms profusely in midsummer.

Each 3 10

Large, strong roots..\$0.45 \$1.15 \$3.50



Honeysuckle

Hill's "Quality" Roses

21 Best Varieties

GARDEN HYBRIDS (STRICTLY HARDY)

Prices of Roses, except where noted, 35 cts. each, \$3 for 10, \$27 per 100.

Anna de Diesbach—Bright Carmine; a beautiful shade; very large.

Alfred Colomb—Brilliant carmine-crimson; very large, full and globular.

American Beauty
—One of the grandest and most beautiful Roses. Immense buds and flowers; rich glowing crimson. 40 cts. each. \$3.25 for 10.

Baroness Rothschild—An exquisite shade of rich, satiny pink, very symmetrical, distinct and beautiful.

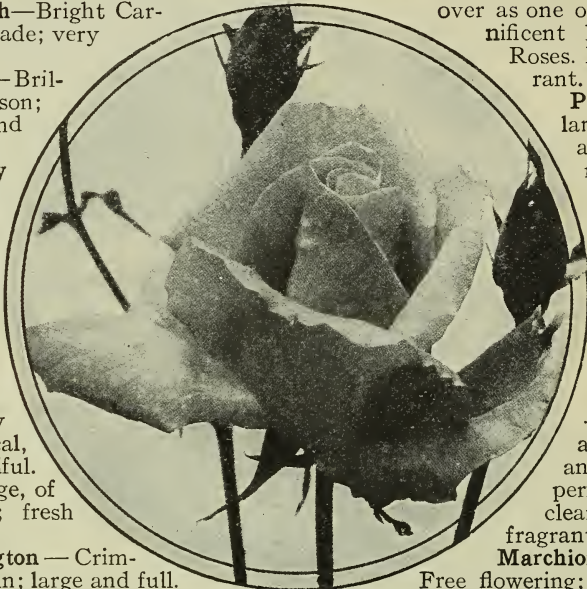
Clio—Flowers large, of fine globular form; fresh color.

General Washington—Crimson, fading in the sun; large and full.

Margaret Dickson—Very large; beautiful white.

Fisher Holmes—Beautiful and valuable; deep crimson.

General Jacquemont—Famous the world



over as one of the most magnificent hardy crimson Roses. Large, very fragrant.

Paul Neyron—The largest and finest of all. Flowers immense; shining pink, clear and beautiful; very double and full; finely scented.

Magna Charta
—Large, double flowers; rosy red, flushed crimson.

John Hopper
—Hardy; abundant bloomer; solid and regular flowers, perfectly double; clear, rosy pink, very fragrant.

Marchioness of Lorne
—Free flowering; large, sweet and full; rich rose, center carmine.

Marshall P. Wilder—Large and well formed; cherry-carmine.

Ulrich Brunner—Rich, glowing crimson flamed; large, full, long stemmed.

BEDDING ROSES

Baby Rambler—Rose hybridists certainly made a happy combination when they succeeded in creating this wonderful Rose. Imagine a bushy little Rose plant with all the beauty and great clusters of the Crimson Rambler, then add to this that it will bloom constantly all summer, and you have an ideal plant for borders and beds. Strong field grown plants.

Clothilde Soupert—Blooms all summer and until late in the fall. Medium size; very double and beautifully imbricated; produced in clusters; pearly white. 1 yr. plants, 15 cts. each, 40 cts. for 3, \$1.25 for 10, \$12 for 100.

CLIMBING ROSES

Crimson Rambler—The most popular Climbing Rose in cultivation. In all parts of the country during June and July the gorgeous crimson of this Rose can be seen in all its glory. Attains a height of 10 to 20 feet in a single season.

Baltimore Belle—A rapid-growing, dark-leaved prairie Rose.

HILL'S 50 GREAT BARGAINS for 1913

HILL PAYS THE FREIGHT

35 Mail Packages, 14 Freight Packages, Sent Prepaid



D. HILL, Pres.

All collections on this sheet prepaid to destination. Safe arrival guaranteed to all points in United States

My motto from the first has always been "Give the customer more than he expects." My 50 Great Bargain Sheet has been an exclusive feature for over half a century and has become so favorably known that thousands of people await each year its coming before they buy their trees and plants. I prepay freight on everything offered on this sheet. Yes, sir, that's my proposition; no other growers dare make an offer like this. I know how carefully and economically my trees are grown. I have worked years to perfect my methods in order to grow the best trees and sell at lowest prices. I use no "Agents" or "Salesmen," but sell direct to the planter. By cutting out these useless middlemen I can sell you my high quality, sure growth Evergreens at a 50% saving.

These collections are the greatest money saving offers ever made by any reputable establishment. All trees warranted genuine Hill Stock and true to name, scientifically grown to develop big heavy, fibrous roots and strong asymmetrical tops. They cannot fail to please you as they stand supreme for quality, quantity and cheapness. Our reputation has been built on the quality of our stock. Purchase your Evergreens from true Evergreen Specialists. We are the only extensive growers of Evergreens in America; this one line has our undivided time, attention, devotion and study. We are thus Evergreen Specialists in a sense which possesses a real value and significance. If you have never bought trees here select some of these bargains as samples. If you are an old customer you will find many things you want. At the low prices quoted we cannot change, divide or alter these collections.

Sincerely yours,

D. HILL, Pres.

THE D. HILL NURSERY CO.

Hill's Wonderful \$1.00 Offers

BY MAIL, POSTPAID

\$1.00 Per Package; 6 Packages for \$5.00.

The following collections comprising HILL'S FAMOUS FOREST TREE SEEDLINGS are the greatest offers ever made by any reputable establishment. The collections comprise all of the leading time-tested varieties of trees which will do well everywhere. In no case are they cheap or inferior stock, these are the famous HILL TREES; all carefully packed, plainly labelled, and postage prepaid to destination. Safe arrival guaranteed to any point in the United States.

SEEDLINGS

- 1.—100 Norway Spruce...2 yr. seedlings
- 2.— 75 Norway Spruce...3 yr. seedlings
- 3.—100 Scotch Pine...2 yr. seedlings
- 4.— 75 Scotch Pine...3 yr. seedlings
- 5.— 50 Blue Spruce...2 yr. seedlings
- 6.—100 White Pine...2 yr. seedlings
- 7.—100 Austrian Pine...2 yr. seedlings
- 8.— 75 Austrian Pine...3 yr. seedlings
- 9.—100 American Arbor Vitae
.....2 yr. seedlings
- 10.—100 Jack Pine...2 yr. seedlings
- 11.— 50 Jack Pine...3 yr. seedlings
- 12.— 65 Black Hill Spruce 2 yr. seedlings
- 13.— 50 Black Hill Spruce 3 yr. seedlings
- 14.— 65 Concolor Fir...2 yr. seedlings

- 15.— 50 Concolor Fir...3 yr. seedlings
- 16.—100 Ponderosa Pine...2 yr. seedlings
- 17.— 75 White Spruce...2 yr. seedlings
- 18.— 50 White Spruce...3 yr. seedlings
- 19.— 75 Chinese Arbor Vitae
.....1 yr. seedlings
- 20.— 75 Pitch Pine...2 yr. seedlings
- 21.—100 Red Pine...2 yr. seedlings
- 22.— 75 Red Pine...3 yr. seedlings
- 23.— 75 Dwarf Mountain Pine
.....2 yr. seedlings
- 24.— 50 Red Cedar...1 yr. seedlings
- 25.— 75 Englemann Spruce 2 yr. seedlings
- 26.—100 Catalpa Speciosa 1 yr. seedlings
- 27.—125 American White Elm
.....1 yr. seedlings
- 28.—100 American White Ash
.....1 yr. seedlings
- 29.—100 Soft Maple...1 yr. seedlings
- 30.—100 Black Locust...1 yr. seedlings
- 31.— 50 American Linden 1 yr. seedlings
- 32.—100 European Larch...1 yr. seedlings
- 33.—100 Box Elder...1 yr. seedlings
- 34.—100 European Linden 1 yr. seedlings
- 35.—100 Hard Maple...1 yr. seedlings

The Admiration of Every One.
"A few years ago I purchased a quantity of your Evergreens for windbreak. I lost only three or four out of the whole lot. They are now about 30 feet high, and the admiration of everyone who sees them. I now wish to buy some more and want you to send me your catalogue and Bargain Sheet." W. F. BECK, Lincoln, Nebr.

15 Bargain Lots

Freight Prepaid

These trees are all well rooted and are first-class in every way. Genuine HILL STOCK, scientifically grown to develop good fibrous roots and strong symmetrical tops. They cannot fail to please you. Plant your windbreaks, shelterbelts, hedges, etc., this year. The trees comprising these wonderful collections are also valuable for lawn and garden planting. They are bound to give satisfaction. Hardy everywhere. Warranted to be absolutely true to name. No two varieties alike in same collection and each article distinctly and plainly labelled. Freight charges prepaid to destination. Safe arrival and satisfaction guaranteed.

Collection No. 36

Price \$5.00

35 Fine Transplanted Evergreens.

- Big heavy field grown trees for quick results. The kind that grows well everywhere. The leading and best varieties for quick results. Suitable for lawn windbreak or garden planting. All heavily rooted. Carefully packed and plainly labelled. Big value for the money.
- 5 Black Hill Spruce...1 to 1½ feet
 - 10 Norway Spruce...1 to 1½ feet
 - 5 White Pine...1 to 1½ feet
 - 5 American Arbor Vitae...1 to 1½ feet
 - 5 White Spruce...1 to 1½ feet
 - 5 Douglas Fir...10 to 12 inches

Collection No. 37

Price \$5.00

30 Choice, Hardy Transplanted Evergreens.

Strong and well rooted trees in each instance. Wonderful value for the money. The finest collection ever offered in one group by this or any other establishment. Full and complete description may be found in catalog. All hardy, distinctive and valuable varieties. Each sort plainly labelled. Don't fail to include this collection in your order. Freight prepaid to destination.

- 5 White Pine...1 to 1½ feet
- 5 Scotch Pine...1 to 1½ feet
- 5 Black Spruce...1 to 1½ feet
- 5 Jack Pine...10 to 12 inches
- 5 Swiss Stone Pine...10 to 12 inches
- 5 Dwarf Mountain Pine...8 to 12 inches

We Even Exel Our Advertisements.

"Evergreens shipped me on Wednesday arrived Friday in fine shape in spite of the hot weather. They were set out at once, and they look almost as fresh now as before they were taken up. You did better than you advertised."

C. E. CASTLE, Lakeside, Mich.

Spring Arrives in Perfect Shape.

"Your shipment consisting of 25 Norway Spruce has arrived in perfect shape and everything is satisfactory."

A. O. NOVANDER, Morgan Park, Ill.

More Bargains and Special Information on OTHER SIDE

Collection No. 38. Price \$5.00

40 Transplanted Hedge and Lawn Evergreens.

Remarkable for their color of foliage. Very attractive in appearance. This stock is of the same surprising quality which is characteristic of all Hill Evergreens. Being perfectly hardy they increase in value and beauty each year. This offer stands supreme for quality, quantity and cheapness. All plainly labelled; carefully packed in genuine peat moss. Freight prepaid to destination.

- 25 American Arbor Vitae... 6 to 12 inches
- 6 Douglaa Fir 10 to 12 inches
- 6 Balsam Fir 10 to 12 inches
- 6 Hemlock 10 to 12 inches

Collection No. 39. Price \$10.00

100 Transplanted Evergreens. Four Leading Varieties.

This collection is comprised of the best varieties of time-tested hardy sorts. Well rooted stock that will grow and please you. Remarkable for their clean bright foliage which is beautiful at all seasons. Regular, symmetrical and sturdy of growth; hardy everywhere. Sure to grow and just as sure to please. All distinctly and carefully labelled. Freight prepaid.

- 25 Norway Spruce 10 to 12 inches
- 25 White Pine 6 to 12 inches
- 25 Balsam Fir 10 to 12 inches
- 25 Red Cedar 6 to 10 inches

Collection No. 40. Price \$5.00

50 Fine Transplanted Windbreak Trees.

An exceptional opportunity to secure a genuine Hill Evergreen windbreak at low cost. We recommend this variety as one of the most reliable for general planting. Remarkable for the striking beauty of its evergreen foliage and strong regular, symmetrical growth. Once planted they are practically permanent and increase in value every year.

- 50 White Pine 1 to 1½ feet

Collection No. 41. Price \$5.00

35 Transplanted Evergreens. A splendid assortment of general and increasing popularity everywhere.

This assortment will give absolute satisfaction to every purchaser. For making ornamental groups and screens they are splendid and they are unequalled for a single specimen, clumps and cemetery decoration. These Evergreens are hardy in all sections of the United States, rapid growers, with bright interesting foliage. Freight charges prepaid to destination.

- 5 Colorado Blue Spruce .. 10 to 12 inches
- 5 Pyramidal Arbor Vitae... 6 to 10 inches
- 5 Siberian Arbor Vitae.... 8 to 10 inches
- 5 Hemlock 6 to 10 inches
- 5 Norway Spruce 10 to 12 inches
- 5 American Arbor Vitae... 6 to 12 inches
- 5 Scotch Pine 12 to 18 inches

Collection No. 42. Price \$5.00

30 large, heavy, well-rooted transplanted evergreens.

Among the many varieties of Evergreens handled by us during the fifty-six years we have been in business the two varieties offered in this collection stand out as being of the greatest superiority. The hardiness of these trees, their distinctive beauty, freedom and sureness of growth and other excellent qualities have placed them in the front rank of Hill high quality Evergreens. For full description see catalog. Strong, vigorous growers. Freight charges prepaid to your nearest Railroad station.

- 15 Norway Spruce 2 to 3 feet
- 16 American Arbor Vitae... 2 to 3 feet

Collection No. 43. Price \$5.00

60 large, fine, transplanted evergreens for hedge planting.

A most remarkable variety, conceded to be the best plant in existence for hedging purposes. Justly famous for the beauty of its evergreen foliage and strong symmetrical growth. Can be trimmed to any shape or form desired. The foliage is dark green, soft, flat and fern-like; hardy in the North, magnificent in the South. Big value for the money. Carefully packed in damp genuine peat moss and delivered to your nearest Railroad station. All charges prepaid.

- 60 American Arbor Vitae ... 1½ to 2 feet

Collection No. 44. Price \$5.00

Hill's Special Windbreak Offer.

60 reliable, time-tested, transplanted evergreens. Absolutely Hill's Best Quality.

Evergreen windbreaks are the biggest permanent asset any farmer can add to his acres. Protects stock; saves fuel; keeps houses and barns warmer; insures larger and better crops; affords ample protection for fruit orchards. Evergreen windbreaks are actual profit makers and money savers, each and every day in the year. The trees in this collection are of the surpassing quality which is characteristic of Hill's Stock. Our prices are as low as can be made on the quality of trees we offer with a minimum margin of profit. No middlemen; we sell direct to the planter. All charges prepaid to your nearest Railroad station.

- 20 Norway Spruce 10 to 12 inches
- 20 White Pine 6 to 12 inches
- 20 American Arbor Vitae... 6 to 12 inches

Collection No. 45. Price \$10.00

A small Nursery for only \$10.00.

800 Choice Evergreen Seedlings.

These are all strong, stocky, well rooted seedlings, carefully grown both as to root and top; a little extra care given them will show splendid results. Our customers can rely upon our experience in this particular. Please note the low price, also the extensive list embracing the finest and best varieties in cultivation. After each variety we have indicated the height and each sort will be plainly labelled, carefully packed and delivered to your nearest Railroad station, all charges prepaid. Safe arrival guaranteed to any point in the United States.

- 100 Norway Spruce 4 to 8 inches
- 100 White Pine 3 to 6 inches
- 100 Jack Pine 6 to 10 inches
- 100 Flexilis Pine 3 to 6 inches
- 100 Red Pine 3 to 6 inches
- 100 Scotch Pine 6 to 12 inches
- 100 Austrian Pine 4 to 8 inches
- 100 European Larch 10 to 18 inches

Collection No. 46. Price \$5.00

550 Choice Hill Quality Evergreen

Seedlings.

An ideal collection of choice Evergreens suitable for windbreaks. Adapted for planting in all parts of the United States and Canada. This collection is a favorite one. They will be the leaders in the Evergreen world for years to come. We strongly urge you to order this collection. Every tree is hardy and will develop into large stately specimens; worth as much as five times as many cheap and unknown kinds possessing little or no merit. Boxed and packed free. Freight prepaid to destination.

- 150 Norway Spruce 8 to 10 inches
- 200 White Pine 3 to 6 inches
- 200 Red Pine 4 to 6 inches

Collection No. 47. Price \$5.00

45 Hardy, valuable transplanted Evergreens.

Unsurpassed for windbreaks; suitable for planting everywhere. Plant in three rows as follows: Place 10 feet apart and break joints; Jack Pine in outside row; Scotch Pine middle row; Norway Spruce in outside row. Strong sturdy trees such as we have been selling for over half a century for planting in all parts of the United States and Canada. Our reputation stands back of this stock. We guarantee you will not be disappointed. Fast growers; perfect in form and foliage; heavily rooted. Great value for the money. Freight prepaid to destination.

- 15 Jack Pine 2 to 3 feet
- 15 Scotch Pine 12 to 18 inches
- 15 Norway Spruce 12 to 18 inches

Collection No. 48. Price \$10.00

1250 Hill's Forest Tree Seedlings.

Hill's famous woodlot collection; a valuable and liberal assortment of fast growing trees. These 1,250 trees will, in a few years, produce all the fence posts, firewood, etc., required on any farm. No better collection can be bought elsewhere, price and quality considered. These are the famous Hill trees—the best quality in the land. Freight prepaid to destination.

- 100 Catalpa Speciosa 6 to 12 inches
- 100 Black Locust 6 to 12 inches
- 100 Red Oak 6 to 12 inches
- 100 Burr Oak 6 to 12 inches
- 100 American White Elm ... 6 to 12 inches
- 200 Soft Maple 6 to 12 inches
- 100 American White Ash... 6 to 12 inches
- 100 European Larch 6 to 10 inches
- 100 Box Elder 6 to 12 inches
- 100 Hard Maple 4 to 8 inches
- 100 European Linden 6 to 12 inches
- 50 Carolina Poplar 2 to 3 feet

Collection No. 49. Price \$5.00

250 Evergreen Seedlings.

200 Deciduous Tree Seedlings.

Here is a collection of trees to which we wish to call particular attention. All of them are gems of the first water, representing the cream of all our entire list. If you could know them as we do you would share with us in our enthusiasm. Do not pass this collection without ordering. A big value for the money. All carefully packed and delivered to your nearest Railroad station; charges prepaid.

- 50 Norway Spruce 4 to 8 inches
- 50 Catalpa Speciosa 6 to 12 inches
- 50 American Arbor Vitae ... 3 to 4 inches
- 50 Black Locust 6 to 12 inches
- 50 Jack Pine 3 to 6 inches
- 50 American White Elm ... 6 to 12 inches
- 50 Austrian Pine 3 to 5 inches
- 50 American Linden 6 to 12 inches
- 50 Scotch Pine 6 to 12 inches

Collection No. 50. Price \$5.00

70 Strong, Sturdy Shade Trees.

The standard varieties of shade and ornamental trees contained in this collection comprise the best and most useful. We have spared no expense or effort in growing these sturdy well rooted trees and each and every one will develop into handsome, sturdy specimens. This collection stands without a rival in quality, quantity and value. Freight prepaid.

- 20 American White Elm 3 to 4 feet
- 10 Carolina Poplar 2 to 3 feet
- 20 Catalpa Speciosa 4 to 6 feet
- 10 Norway Poplar 6 to 8 feet
- 10 Norway Maple 3 to 4 feet

"REMEMBER! HILL PAYS THE FREIGHT"**"REMEMBER! HILL PAYS THE FREIGHT"****D. HILL NURSERY COMPANY, Inc., Evergreen Specialists***Largest Growers in America : DUNDEE, ILLINOIS*

H

A Word of Appreciation

We wish here to express sincere thanks to our many friends and patrons, who have written kind words relative to the quality of stock and treatment they have received from us the past season. We greatly appreciate these expressions of confidence and shall endeavor to maintain the reputation they have so kindly given us.

Hill Quality

The name of D. Hill, has come to be synonymous with "High Quality" in Evergreens. Over half a century of conscientious effort, unbounded enthusiasm, a close study of the value of every new specie introduced; and above all an ambition to make new friends and keep the old, has been the method by which this high position has been reached.

Your Success With Our Stock

is a matter in which we are mightily interested. Therefore we endeavor to do everything reasonable within our power to help you succeed with the stock we send you, because we love trees and want you to enjoy them also. **No firm is more careful in filling orders:** we use every reasonable means to learn the customers' wishes without delaying the shipment. Your interests are our interests, and we present you this 1913 catalog, confident that we merit your trade, and assure you of the best treatment, whether the order is large or small.

BEAUTIFUL GRAFTED BLUE SPRUCE Special Offer No. 100

This tree stands supreme in the majestic beauty of its foliage, form and color. This special offer is made because we want you to know this wonderful tree as we do — the most ornamental tree in existence. It excites the wonder and admiration of all. The bright gorgeous silvery blue tints, when flashed in the sunlight, afford a wonderful aspect. It grows to perfection in all parts of the country, and is absolutely hardy. Thousands took advantage of this wonderful offer last season and many expressed great surprise at the magnificence of the tree. This appreciation leads us to again feature this special offer this season. The illustration shows the tree dug with ball of earth and burlapped ready to box and ship to you.

Hardy, long-lived.

Sure to grow.

Rich gorgeous foliage.

1 Grafted Blue Spruce
1 to 1½ ft. B. & B.

\$1.25



The Beautiful Grafted Blue Spruce

HILL'S 50 GREAT BARGAINS FOR 1915

HILL PAYS THE FREIGHT

35 Mail Packages, 14 Freight Packages, All Sent Prepaid



D. HILL,
The Evergreen Specialist.

All collections on this sheet prepaid to destination. Safe arrival guaranteed to all points in United States.

Ever since my Evergreen business was established—and that's over 50 years ago—my motto has always been: "Give every customer more than he expects." Living up to that motto all these years, together with constant, never-tiring experiment, and careful growing methods, have combined to give Hill's Evergreens a national reputation for quality and have enabled me to build up the largest Evergreen business in America.

My old friends—and their names are legion—need no assurance from me of business integrity, but to my new friends that I meet this year for the first time, let me say that no one can serve you better or more economically or more satisfactorily than I. Remember, it is the oldest, largest and most reliable Evergreen firm in America who is offering you these money-saving bargains. They are beyond any and all doubt the greatest money-saving offers ever made by any reputable nursery firm. A dollar's worth of trees for every dollar sent me; a big, honest, wholesome guarantee back of every tree than means just what it says goes with each and every one of these collections—every single one of these trees are absolutely warranted genuine Hill quality, scientifically grown to develop big, heavy fibrous roots and strong, symmetrical tops. I guarantee that all trees must reach you in first-class condition, no matter where you live in the U. S. A., or money back or shipment duplicated, whichever you prefer. I prepay all freight charges to all points in the United States. What could be fairer?

Buy your Evergreens direct from a true Evergreen Specialist. Save \$3.00 to \$5.00 out of every \$10.00 on your Evergreens. Get your Evergreens when you want them direct from the grower, delivered fresh, perfectly packed and properly boxed and guaranteed to be first-class by a guarantee you can depend upon. Then decide whether you will buy Hill Evergreens, of the famous Hill quality, and at my low grower's net prices—or whether you will pay a premium to an agent simply for writing down your order for you. Complete Planting instructions furnished free with each shipment. Sincerely yours,

D. HILL, Pres.
D. HILL NURSERY CO.

Hill's Wonderful \$1.00 Offers

BY MAIL. POSTPAID.

\$1.00 Per Pkg. Any 6 Pkgs. for \$5.00

The following collections, comprising HILL'S FAMOUS TREE SEEDLINGS, are the greatest offers ever made by any reputable establishment. The collections comprise all of the leading time-tested varieties of trees which will do well everywhere. In no case are they cheap or inferior stock; these are the famous HILL TREES; all carefully packed, plainly labelled, and postage prepaid to destination. Safe arrival guaranteed to any point in the United States. Complete planting instructions in each package.

SEEDLINGS

- 1.—100 Norway Spruce .2 yr. seedlings
- 2.— 75 Norway Spruce .3 yr. seedlings
- 3.—100 Scotch Pine .2 yr. seedlings
- 4.— 75 Scotch Pine .3 yr. seedlings
- 5.— 75 Colo. Blue Spruce 3 yr. seedlings
- 6.—100 White Pine .2 yr. seedlings
- 7.— 75 White Pine .3 yr. seedlings
- 8.—100 Austrian Pine .2 yr. seedlings
- 9.— 75 Austrian Pine .3 yr. seedlings
- 10.—100 Am. Arbor Vitae .3 yr. seedlings
- 11.—100 Jack Pine .2 yr. seedlings
- 12.— 75 Jack Pine .3 yr. seedlings
- 13.—100 Douglas Fir .2 yr. seedlings
- 14.— 75 Douglas Fir .3 yr. seedlings
- 15.— 75 Concolor Fir .2 yr. seedlings
- 16.— 50 Concolor Fir .3 yr. seedlings

- 17.— 75 Black Hill Spruce .3 yr. seedlings
- 18.—100 Ponderosa Pine .2 yr. seedlings
- 19.— 75 Ponderosa Pine .3 yr. seedlings
- 20.— 50 Ponderosa Pine .4 yr. seedlings
- 21.— 75 White Spruce .3 yr. seedlings
- 22.— 75 Engelman Spruce 2 yr. seedlings
- 23.— 50 Engelman Spruce 3 yr. seedlings
- 24.—100 European Larch 2 yr. seedlings
- 25.—100 Dwarf Mugho Pine .3 yr. seedlings
- 26.—100 Norway Pine .3 yr. seedlings
- 27.—100 Chinese Arbor Vitae .1 yr. seedlings
- 28.—100 Soft Maple .1 yr. seedlings
- 29.—100 Catalpa Speciosa 1 yr. seedlings
- 30.—100 White Ash .1 yr. seedlings
- 31.—100 Wild Black Cherry .1 yr. seedlings
- 32.— 75 Red Oak .1 yr. seedlings
- 33.— 75 Am. Sweet Chestnut .1 yr. seedlings
- 34.— 75 Black Oak .1 yr. seedlings
- 35.—150 Black Locust .1 yr. seedlings

The Admiration of Everyone.

"A few years ago I purchased a quantity of your Evergreens for windbreak. I lost only three or four out of the whole lot. They are now about 30 feet high, and the admiration of everyone who sees them. I now wish to buy some more and want you to send me your catalogue and Bargain Sheet."
W. F. BECK, Lincoln, Nebr.

15 Bargain Lots

Freight Prepaid.

These trees are all well rooted and are first-class in every way. Genuine HILL STOCK, scientifically grown to develop good fibrous roots and strong, symmetrical tops. They cannot fail to please you. Plant your windbreaks, shelterbelts, hedges, etc., this year. The trees comprising these wonderful collections are also valuable for lawn and garden planting. They are bound to give satisfaction. Hardy everywhere. Warranted to be absolutely true to name. No two varieties alike in same collection, and each article distinctly and plainly labelled. Freight charges prepaid to destination. Safe arrival and satisfaction guaranteed.

Collection No. 36

Price \$5.00.

40 Fine Transplanted Evergreens.

Big, heavy field grown trees for quick results. The kind that grows well everywhere. The leading and best varieties for quick results. Suitable for lawn, windbreak or garden planting. All heavily rooted. Carefully packed and plainly labelled. Big value for the money.

- 5 Scotch Pine .2-3 feet
- 5 Black Hill Spruce .1-1½ feet
- 10 Norway Spruce .1-1½ feet
- 5 White Pine .1-1½ feet
- 5 Douglas Fir .1-1½ feet
- 5 White Spruce .1-1½ feet
- 5 Jack Pine .1-1½ feet

Collection No. 37

Price \$5.00.

35 Superb, Hardy Transplanted Evergreens

Strong and well rooted trees in each instance. Wonderful value for the money. The finest collection ever offered in one group by this or any other establishment. Full and complete description may be found in catalog. All hardy, distinctive and valuable varieties. Each sort plainly labelled. Don't fail to include this collection in your order. Freight prepaid to destination.

- 5 White Pine .1½-2 feet
- 10 Scotch Pine .1-1½ feet
- 5 Hemlock .6-10 inch
- 5 Ponderosa Pine .10-12 inch
- 5 Jack Pine .1½-2 feet
- 5 Dwarf Mugho Pine .6-10 inch

Collection No. 38. Price \$5.00

60 Choice Transplanted Windbreak Trees

An exceptional opportunity to secure a genuine Hill Evergreen Windbreak at a low cost. We recommend these varieties as the most reliable for general planting. Remarkable for the striking beauty of their evergreen foliage and strong, regular, symmetrical growth. Once planted they are practically permanent and increase in value every year.

- 40 White Pine .1-1½ feet
- 15 Norway Spruce .1-1½ feet
- 5 Scotch Pine .2-3 feet

Complete Planting Instructions Furnished Free with Each Shipment. (Over)

Complete Planting Instructions Furnished Free with Each Shipment.

Collection No. 39. Price \$5.00

45 Heavy Transplanted Hedge and Lawn Evergreens.

Remarkable for their color of foliage. Very attractive in appearance. This stock is of the same surprising quality which is characteristic of all Hill Evergreens. Being perfectly hardy they increase in value and beauty each year. This offer stands supreme for quality, quantity and cheapness. All plainly labelled, carefully packed in genuine peat moss. Freight prepaid to destination.

- 20 Scotch Pine 1½-2 feet
- 5 Douglas Fir 1-1½ feet
- 5 Norway Spruce 1-1½ feet
- 15 White Pine 6-12 inch

Collection No. 40. Price, \$5.00

40 Large Transplanted Evergreens. Four Leading Varieties.

This collection is composed of the best varieties of time-tested hardy sorts. Well rooted stock that will grow and please you. Remarkable for their clean, bright foliage, which is beautiful at all seasons. Regular, symmetrical and sturdy of growth; hardy everywhere. Sure to grow and just as sure to please. All distinctly and carefully labelled. Freight prepaid.

- 10 Norway Spruce 1-1½ feet
- 10 Scotch Pine 2-3 feet
- 10 White Pine 1-1½ feet
- 10 Jack Pine 1-1½ feet

Collection No. 41. Price \$5.00

35 Transplanted Evergreens. A Splendid Assortment of General and Increasing Popularity Everywhere.

This assortment will give absolute satisfaction to every purchaser. For making ornamental groups and screens they are splendid, and they are unequalled for a single specimen, clumps and cemetery decoration. These Evergreens are hardy in all sections of the United States, rapid growers, with bright, interesting foliage. Freight charges prepaid to destination.

- 5 Colorado Blue Spruce 10-12 inch
- 5 Douglas Fir 1-1½ feet
- 5 Hemlock 6-10 inch
- 5 Concolor Fir 10-12 inch
- 5 Norway Spruce 1½-2 feet
- 5 Austrian Pine 1-1½ feet
- 5 Scotch Pine 1-1½ feet

We Even Excel Our Advertisements.
"Evergreens shipped me on Wednesday arrived Friday in fine shape in spite of the hot weather. They were set out at once, and they look almost as fresh now as before they were taken up. You did better than you advertised."

C. F. CASTLE, Lakeside, Mich.

Spruce Arrives in Perfect Shape.
"Your shipment consisting of 26 Norway Spruce has arrived in perfect shape and everything is satisfactory."
A. O. NOVANDER, Morgan Park, Ill.

Collection No. 42. Price \$5.00

30 Large, Heavy, Well Rooted Transplanted Evergreens.

Among the many varieties of Evergreens handled by us during the sixty years we have been in business, the two varieties offered in this collection stand out as being of the greatest superiority. The hardiness of these trees, their distinctive beauty, freedom and sureness of growth and other excellent qualities have placed them in the front rank of Hill high quality Evergreens. For full description see catalog. Strong, vigorous growers. Freight charges prepaid to your nearest Railroad station.

- 15 Norway Spruce 2-3 feet
- 15 Scotch Pine 2-3 feet

Collection No. 43. Price \$5.00

40 Fine Transplanted Evergreens.

This fine collection is composed of four valuable varieties which are conceded to be thoroughly satisfactory for general planting everywhere. Each sort is guaranteed absolutely hardy and will grow equally well North, East, South, West. You will make no mistake in ordering this collection of wonderful Evergreen trees. If you are thinking of planting an Evergreen windbreak, try this assortment. For full description see catalog. Will be carefully packed in damp, genuine peat moss and delivered to your nearest railroad station all charges prepaid.

- 10 Colorado Blue Spruce 10-12 inch
- 10 Concolor Fir 10-12 inch
- 10 Black Hill Spruce 1-1½ feet
- 10 Scotch Pine 2-3 feet

Collection No. 44. Price \$5.00

"SPECIAL WINDBREAK OFFER"
95 Reliable, Time-tested, Transplanted Evergreens. Absolutely Hill's

Best Quality.
Evergreen windbreaks are the biggest permanent asset any farmer can add to his acres. Protects stock; saves fuel; keeps houses and barns warmer; insures larger and better crops; affords ample protection for fruit orchards. Evergreen windbreaks are actual profit makers and money savers each and every day in the year. The trees in this collection are of the surpassing quality which is characteristic of Hill's Stock. All charges prepaid to your nearest Railroad station.

- 25 White Pine 1-1½ feet
- 25 Norway Spruce 1-1½ feet
- 25 Ponderosa Pine 1-1½ feet
- 20 European Larch 1-2 feet

Collection No. 45. Price \$5.00

A Choice Assortment of 35 Highly Ornamental Evergreens.

This collection contains three very ornamental varieties. Their various shades of color form a most pleasing contrast from the silvery Blue Spruce to the deep, dark green of the Black Hill Spruce, and soft, silvery foliage of the Concolor. When planted in groups their ornamental effect is beyond description. Each variety is of the hardy type fit for any climate. Delivered to your nearest Railroad station all charges prepaid.

- 10 Black Hill Spruce 1-1½ feet
- 15 Concolor Fir 10-12 inch
- 10-Colorado Blue Spruce 10-12 inch

Collection No. 46. Price \$10.00

800 Fine Evergreen Seedlings. A Small Nursery for only \$10.00.

The trees in this list are well suited to all soils and will do well anywhere. A money-saving lot. All are strong, stocky and well rooted, carefully grown, having an abundance of fine, fibrous feeding roots and good tops. The collection includes the finest and best varieties for general planting in existence. Each variety will be plainly labelled, packed in genuine peat moss and delivered to your nearest Railroad station, all charges prepaid. Safe arrival guaranteed to any point in the United States.

- 100 American Arbor Vitae 3-6 inch
- 100 Norway Spruce 6-10 inch
- 100 Austrian Pine 6-10 inch
- 100 Scotch Pine 6-12 inch
- 100 Jack Pine 6-12 inch
- 100 White Spruce 4-8 inch
- 100 Douglas Fir 4-8 inch
- 100 White Pine 4-8 inch

Collection No. 47. Price \$5.00

45 Hardy, Valuable Transplanted Evergreens.

Unsurpassed for windbreaks; suitable for planting everywhere. Plant in three rows, as follows: Place 10 feet apart and break joints; Jack Pine in outside row; Scotch Pine middle row; Norway Spruce in inside row. Strong, sturdy trees such as we have been selling for over half a century for planting in all parts of the United States and Canada. Our reputation stands back of this stock. We guarantee you will not be disappointed. Fast growers; perfect in form and foliage; heavily rooted. Great value for the money. Freight prepaid to destination.

- 15 Jack Pine 1-1½ feet
- 15 Scotch Pine 1½-2 feet
- 15 Norway Spruce 1-1½ feet

Collection No. 48. Price \$5.00

450 Hill's Choice, Hardy, Selected Ornamental Evergreen Seedlings, for Lawns, Hedges, Etc.

Don't overlook this wonderful offer. Here is a collection of trees to which we wish to call particular attention. All of them are gems of the first water, representing the cream of all our entire list. If you could know them as we do, you would share with us in our enthusiasm. Do not pass this collection without ordering. A big value for the money. All carefully packed and delivered to your nearest Railroad station, charges prepaid.

- 100 Colorado Blue Spruce 4-6 inch
- 50 Concolor Fir 3-6 inch
- 100 Douglas Fir 3-6 inch
- 50 Black Hill Spruce 3-6 inch
- 100 American Arbor Vitae 3-6 inch
- 50 Dwarf Mugho Pine 4-6 inch

Collection No. 49. Price \$5.00

HILL'S FAMOUS WOODLOT COLLECTION

A Valuable Assortment of 600 Fast Growing Timber Trees.

These trees in a few years' time on any farm will produce all the fence posts, firewood, etc., required. No better collection can be bought elsewhere, price and quality considered. These are the famous Hill trees—the best quality in the land. All plainly labelled, packed in genuine peat moss and charges prepaid to your nearest railroad station.

- 100 Cataipa Speciosa 6-12 inch
- 100 Black Locust 6-12 inch
- 100 American Red Oak 6-12 inch
- 100 European Larch 1-1½ feet
- 100 American White Ash 6-12 inch
- 50 Soft Maple 6-15 inch
- 50 Wild Black Cherry 4-10 inch

Collection No. 50. Price \$5.00

250 Strong, Sturdy, Standard Transplanted Evergreens.

The standard varieties of hedge, lawn and windbreak evergreens contained in this collection comprise the best and most useful. We have spared no expense or effort in growing these sturdy, well rooted trees, and each and every one will develop into handsome, stately specimens. This collection stands without a rival in quality, quantity and value. Freight prepaid.

- 50 American Arbor Vitae 3-6 inch
- 50 Colorado Blue Spruce 3-5 inch
- 50 Dwarf Mugho Pine 3-6 inch
- 50 White Pine 3-6 inch
- 50 Douglas Fir 4-8 inch

"REMEMBER! HILL PAYS THE FREIGHT"

"REMEMBER! HILL PAYS THE FREIGHT"

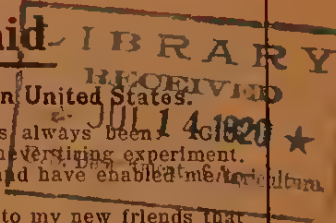
D. HILL NURSERY COMPANY, Inc., DUNDEE, ILLINOIS

Evergreen Specialists. Largest Growers in America

HILL'S 50 GREAT BARGAINS FOR 1915

HILL PAYS THE FREIGHT

35 Mail Packages, 14 Freight Packages, All Sent Prepaid



D. HILL,
The Evergreen Specialist.

All collections on this sheet prepaid to destination. Safe arrival guaranteed to all points in United States.

Ever since my Evergreen business was established—and that's over 60 years ago—my motto has always been "Every customer more than he expects." Living up to that motto all these years, together with constant and careful growing methods, have combined to give Hill's Evergreens a national reputation for quality and have enabled me to build up the largest Evergreen business in America.

My old friends—and their names are legion—need no assurance from me of business integrity, but to my new friends that I meet this year for the first time, let me say that no one can serve you better or more economically or more satisfactorily than I. Remember, it is the oldest, largest and most reliable Evergreen firm in America who is offering you these money-saving bargains. They are beyond any and all doubt the greatest money-saving offers ever made by any reputable nursery firm. A dollar's worth of trees for every dollar sent me; a big, honest, wholesome guarantee back of every tree than means just what it says goes with each and every one of these collections—every single one of these trees are absolutely warranted genuine Hill quality, scientifically grown to develop big, heavy fibrous roots and strong, symmetrical tops. I guarantee that all trees must reach you in first-class condition, no matter where you live in the U. S. A., or money back or shipment duplicated, whichever you prefer. I prepay all freight charges to all points in the United States. What could be fairer?

Buy your Evergreens direct from a true Evergreen Specialist. Save \$3.00 to \$5.00 out of every \$10.00 on your Evergreens. Get your Evergreens when you want them direct from the grower, delivered fresh, perfectly packed and properly boxed and guaranteed to be first-class by a guarantee you can depend upon. Then decide whether you will buy Hill Evergreens, of the famous Hill quality, and at my low grower's net prices—or whether you will pay a premium to an agent simply for writing down your order for you. Complete Planting Instructions furnished free with each shipment. Sincerely yours,

D. HILL, Pres.
D. HILL NURSERY CO.

Hill's Wonderful \$1.00 Offers

BY MAIL. POSTPAID.

\$1.00 Per Pkg. Any 6 Pkgs. for \$5.00

The following collections, comprising HILL'S FAMOUS TREE SEEDLINGS, are the greatest offers ever made by any reputable establishment. The collections comprise all of the leading time-tested varieties of trees which will do well everywhere. In no case are they cheap or inferior stock; these are the famous HILL TREES; all carefully packed, plainly labelled, and postage prepaid to destination. Safe arrival guaranteed to any point in the United States. Complete planting instructions in each package.

SEEDLINGS

- 1.—100 Norway Spruce . . . 2 yr. seedlings
- 2.— 75 Norway Spruce . . . 3 yr. seedlings
- 3.—100 Scotch Pine . . . 2 yr. seedlings
- 4.— 75 Scotch Pine . . . 3 yr. seedlings
- 5.— 75 Colo. Blue Spruce 3 yr. seedlings
- 6.—100 White Pine . . . 2 yr. seedlings
- 7.— 75 White Pine . . . 3 yr. seedlings
- 8.—100 Austrian Pine . . . 2 yr. seedlings
- 9.— 76 Austrian Pine . . . 3 yr. seedlings
- 10.—100 Am. Arbor Vitae . . 3 yr. seedlings
- 11.—100 Jack Pine . . . 2 yr. seedlings
- 12.— 75 Jack Pine . . . 3 yr. seedlings
- 13.—100 Douglas Fir . . . 2 yr. seedlings
- 14.— 76 Douglas Fir . . . 3 yr. seedlings
- 16.— 76 Concolor Fir . . . 2 yr. seedlings
- 16.— 50 Concolor Fir . . . 3 yr. seedlings

- 17.— 76 Black Hill Spruce . . . 3 yr. seedlings
- 18.—100 Ponderosa Pine . . 2 yr. seedlings
- 19.— 75 Ponderosa Pine . . 3 yr. seedlings
- 20.— 50 Ponderosa Pine . . 4 yr. seedlings
- 21.— 76 White Spruce . . . 3 yr. seedlings
- 22.— 75 Engelman Spruce 2 yr. seedlings
- 23.— 50 Engelman Spruce 3 yr. seedlings
- 24.—100 European Larch 2 yr. seedlings
- 25.—100 Dwarf Mugho Pine . . . 3 yr. seedlings
- 26.—100 Norway Pine . . . 3 yr. seedlings
- 27.—100 Chinese Arbor Vitae . . . 1 yr. seedlings
- 28.—100 Soft Maple . . . 1 yr. seedlings
- 29.—100 Catalpa Speciosa 1 yr. seedlings
- 30.—100 White Ash . . . 1 yr. seedlings
- 31.—100 Wild Black Cherry . . . 1 yr. seedlings
- 32.— 75 Red Oak . . . 1 yr. seedlings
- 33.— 75 Am. Sweet Chestnut . . . 1 yr. seedlings
- 34.— 75 Black Oak . . . 1 yr. seedlings
- 35.—150 Black Locust . . . 1 yr. seedlings

The Admiration of Everyone.

"A few years ago I purchased a quantity of your Evergreens for windbreak. I lost only three or four out of the whole lot. They are now about 30 feet high, and the admiration of everyone who sees them. I now wish to buy some more and want you to send me your catalogue and Bargain Sheet." W. F. BECK, Lincoln, Nebr.

15 Bargain Lots

Freight Prepaid.

These trees are all well rooted and are first-class in every way. Genuine HILL SPOCK, scientifically grown to develop good fibrous roots and strong, symmetrical tops. They cannot fail to please you. Plant your windbreaks, shelterbelts, hedges, etc., this year. The trees comprising these wonderful collections are also valuable for lawn and garden planting. They are bound to give satisfaction. Hardy everywhere. Warranted to be absolutely true to name. No two varieties alike in same collection, and each article distinctly and plainly labelled. Freight charges prepaid to destination. Safe arrival and satisfaction guaranteed.

Collection No. 36

Price \$5.00.

40 Fine Transplanted Evergreens.

Big, heavy field grown trees for quick results. The kind that grows well everywhere. The leading and best varieties for quick results. Suitable for lawn, windbreak or garden planting. All heavily rooted. Carefully packed and plainly labelled. Big value for the money.

- 5 Scotch Pine 2-3 feet
- 5 Black Hill Spruce 1-1½ feet
- 10 Norway Spruce 1-1½ feet
- 5 White Pine 1-1½ feet
- 5 Douglas Fir 1-1½ feet
- 5 White Spruce 1-1½ feet
- 5 Jack Pine 1-1½ feet

Collection No. 37

Price \$5.00.

35 Superb, Hardy Transplanted Evergreens

Strong and well rooted trees in each instance. Wonderful value for the money. The finest collection ever offered in one group by this or any other establishment. Full and complete description may be found in catalog. All hardy, distinctive and valuable varieties. Each sort plainly labelled. Don't fail to include this collection in your order. Freight prepaid to destination.

- 5 White Pine 1½-2 feet
- 10 Scotch Pine 1-1½ feet
- 5 Hemlock 6-10 inch
- 5 Ponderosa Pine 10-12 inch
- 5 Jack Pine 1½-2 feet
- 5 Dwarf Mugho Pine 6-10 inch

Collection No. 38. Price \$5.00

60 Choice Transplanted Windbreak Trees

An exceptional opportunity to secure a genuine Hill Evergreen Windbreak at a low cost. We recommend these varieties as the most reliable for general planting. Remarkable for the striking beauty of their evergreen foliage and strong, regular, symmetrical growth. Once planted they are practically permanent and increase in value every year.

- 40 White Pine 1-1½ feet
- 15 Norway Spruce 1-1½ feet
- 5 Scotch Pine 2-3 feet

Complete Planting Instructions Furnished Free with Each Shipment. (Over)

Complete Planting Instructions Furnished Free with Each Shipment.

Collection No. 39. Price \$5.00

45 Heavy Transplanted Hedge and Lawn

Remarkable Evergreen color of foliage. Very attractive in appearance. This stock is of the same surprising quality which is characteristic of all Hill Evergreens. Being perfectly hardy they increase in value and beauty each year. This offer stands supreme for quality, quantity and cheapness. All plainly labelled, carefully packed in genuine peat moss. Freight prepaid to destination.

- 20 Scotch Pine 1½-2 feet
- 5 Douglas Fir 1-1½ feet
- 5 Norway Spruce 1-1½ feet
- 15 White Pine 6-12 inch

Collection No. 40. Price, \$5.00

40 Large Transplanted Evergreens. Four Leading Varieties.

This collection is composed of the best varieties of time-tested hardy sorts. Well rooted stock that will grow and please you. Remarkable for their clean, bright foliage, which is beautiful at all seasons. Regular, symmetrical and sturdy of growth; hardy everywhere. Sure to grow and just as sure to please. All distinctly and carefully labelled. Freight prepaid.

- 10 Norway Spruce 1-1½ feet
- 10 Scotch Pine 2-3 feet
- 10 White Pine 1-1½ feet
- 10 Jack Pine 1-1½ feet

Collection No. 41. Price \$5.00

35 Transplanted Evergreens. A Splendid Assortment of General and Increasing Ornamental Evergreens.

This assortment is everywhere in demand. Satisfaction to every purchaser. For making ornamental groups and screens they are splendid, and they are unequalled for a single specimen, clumps and cemetery decoration. These Evergreens are hardy in all sections of the United States, rapid growers, with bright, interesting foliage. Freight charges prepaid to destination.

- 5 Colorado Blue Spruce 10-12 inch
- 5 Douglas Fir 1-1½ feet
- 5 Hemlock 6-10 inch
- 5 Concolor Fir 10-12 inch
- 5 Norway Spruce 1½-2 feet
- 5 Austrian Pine 1-1½ feet
- 5 Scotch Pine 1-1½ feet

We Even Excel Our Advertisements. "Evergreens shipped me on Wednesday arrived Friday in fine shape in spite of the hot weather. They were set out at once, and they look almost as fresh now as before they were taken up. You did better than you advertised."

C. F. CASTLE, Lakeside, Mich.

Spruce Arrives in Perfect Shape. "Your shipment consisting of 25 Norway Spruce has arrived in perfect shape and everything is satisfactory."
A. O. NOVANDER, Morgan Park, Ill.

Collection No. 42. Price \$5.00

30 Large, Heavy, Well Rooted Transplanted Evergreens.

Among the many varieties of Evergreens handled by us during the sixty years we have been in business, the two varieties offered in this collection stand out as being of the greatest superiority. The hardness of these trees, their distinctive beauty, freedom and sureness of growth and other excellent qualities have placed them in the front rank of Hill high quality Evergreens. For full description see catalog. Strong, vigorous growers. Freight charges prepaid to your nearest Railroad station.

- 15 Norway Spruce 2-3 feet
- 15 Scotch Pine 2-3 feet

Collection No. 43. Price \$5.00

40 Fine Transplanted Evergreens.

This collection is composed of four valuable varieties which are conceded to be thoroughly satisfactory for general planting everywhere. Each sort is guaranteed absolutely hardy and will grow equally well North, East, South, West. You will make no mistake in ordering this collection of wonderful Evergreen trees. If you are thinking of planting an Evergreen windbreak, try this assortment. For full description see catalog. Will be carefully packed in damp, genuine peat moss and delivered to your nearest railroad station all charges prepaid.

- 10 Colorado Blue Spruce 10-12 inch
- 10 Concolor Fir 10-12 inch
- 10 Black Hill Spruce 1-1½ feet
- 10 Scotch Pine 2-3 feet

Collection No. 44. Price \$5.00

"SPECIAL WINDBREAK OFFER"
95 Reliable, Time-tested, Transplanted Evergreens. Absolutely Hill's Best Quality.

Evergreen windbreaks are the biggest permanent asset any farmer can add to his acres. Protects stock; saves fuel; keeps houses and barns warmer; insures larger and better crops; affords ample protection for fruit orchards. Evergreen windbreaks are actual profit makers and money savers each and every day in the year. The trees in this collection are of the surpassing quality which is characteristic of Hill's Stock. All charges prepaid to your nearest Railroad station.

- 25 White Pine 1-1½ feet
- 25 Norway Spruce 1-1½ feet
- 25 Ponderosa Pine 1-1½ feet
- 20 European Larch 1-2 feet

Collection No. 45. Price \$5.00

A Choice Assortment of 35 Highly Ornamental Evergreens.

This collection contains three very ornamental varieties. Their various shades of color form a most pleasing contrast from the silvery Blue Spruce to the deep, dark green of the Black Hill Spruce, and soft, silvery foliage of the Concolor. When planted in groups their ornamental effect is beyond description. Each variety is of the hardy type fit for any climate. Delivered to your nearest Railroad station all charges prepaid.

- 10 Black Hill Spruce 1-1½ feet
- 15 Concolor Fir 10-12 inch
- 10-Colorado Blue Spruce 10-12 inch

Collection No. 46. Price \$10.00

300 Fine Evergreen Seedlings. A Small Nursery for only \$10.00.

The trees in this lot are well suited to all soils and will do well anywhere. A money-saving lot. All are strong, stocky and well rooted, carefully grown, having an abundance of fine, fibrous feeding roots and good tops. The collection includes the finest and best varieties for general planting in existence. Each variety will be plainly labelled, packed in genuine peat moss and delivered to your nearest Railroad station, all charges prepaid. Safe arrival guaranteed to any point in the United States.

- 100 American Arbor Vitae 3-6 inch
- 100 Norway Spruce 6-10 inch
- 100 Austrian Pine 6-10 inch
- 100 Scotch Pine 6-12 inch
- 100 Jack Pine 6-12 inch
- 100 White Spruce 4-8 inch
- 100 Douglas Fir 4-8 inch
- 100 White Pine 4-8 inch

Collection No. 47. Price \$5.00

48 Hardy, Valuable Transplanted Evergreens.

Unsurpassed for windbreaks; suitable for planting everywhere. Plant in three rows, as follows: Place 10 feet apart and break joints; Jack Pine in outside row; Scotch Pine middle row; Norway Spruce in inside row. Strong, sturdy trees such as we have been selling for over half a century for planting in all parts of the United States and Canada. Our reputation stands back of this stock. We guarantee you will not be disappointed. Fast growers; perfect in form and foliage; heavily rooted. Great value for the money. Freight prepaid to destination.

- 15 Jack Pine 1-1½ feet
- 15 Scotch Pine 1½-2 feet
- 15 Norway Spruce 1-1½ feet

Collection No. 48. Price \$5.00

450 Hill's Choice, Hardy, Selected Ornamental Evergreen Seedlings, for Lawns, Hedges, Etc.

Don't overlook this wonderful offer. Here is a collection of trees to which we wish to call particular attention. All of them are gems of the first water, representing the cream of all our entire list. If you could know them as we do, you would share with us in our enthusiasm. Do not pass this collection without ordering. A big value for the money. All carefully packed and delivered to your nearest Railroad station, charges prepaid.

- 100 Colorado Blue Spruce 4-6 inch
- 50 Concolor Fir 3-6 inch
- 100 Douglas Fir 3-6 inch
- 50 Black Hill Spruce 3-6 inch
- 100 American Arbor Vitae 3-6 inch
- 50 Dwarf Mugho Pine 4-6 inch

Collection No. 49. Price \$5.00

HILL'S FAMOUS WOODLOT COLLECTION

A Valuable Assortment of 600 Fast Growing Timber Trees.

These trees in a few years' time on any farm will produce all the fence posts, firewood, etc., required. No better collection can be bought elsewhere, price and quality considered. These are the famous Hill trees—the best quality in the land. All plainly labelled, packed in genuine peat moss and charges prepaid to your nearest railroad station.

- 100 Catalpa Speciosa 6-12 inch
- 100 Black Locust 6-12 inch
- 100 American Red Oak 6-12 inch
- 100 European Larch 1-1½ feet
- 100 American White Ash 6-12 inch
- 50 Soft Maple 6-15 inch
- 50 Wild Black Cherry 4-10 inch

Collection No. 50. Price \$5.00

250 Strong, Sturdy, Standard Transplanted Evergreens.

The standard varieties of hedge, lawn and windbreak evergreens contained in this collection comprise the best and most useful. We have spared no expense or effort in growing these sturdy, well rooted trees, and each and every one will develop into handsome, stately specimens. This collection stands without a rival in quality, quantity and value. Freight prepaid.

- 50 American Arbor Vitae 3-6 inch
- 50 Colorado Blue Spruce 3-6 inch
- 50 Dwarf Mugho Pine 3-6 inch
- 50 White Pine 3-6 inch
- 50 Douglas Fir 4-8 inch

"REMEMBER! HILL PAYS THE FREIGHT"

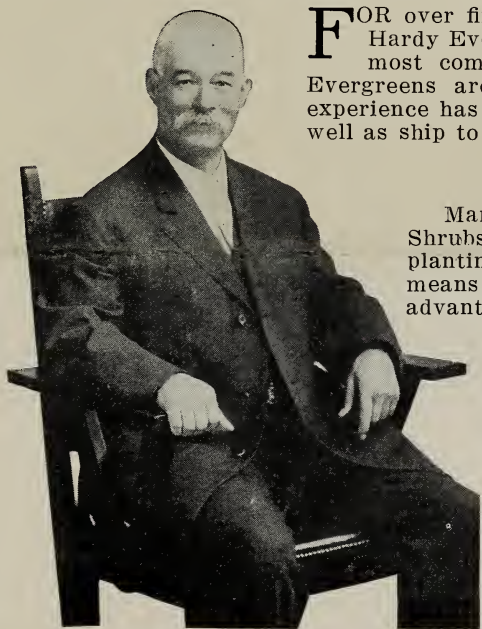
"REMEMBER! HILL PAYS THE FREIGHT"

D. HILL NURSERY COMPANY, Inc., DUNDEE, ILLINOIS

Evergreen Specialists. Largest Growers in America



Hill's Fall 1913 Price List



D. HILL, President

FOR over fifty-six years we have featured the growing of Hardy Evergreens. Our stock comprises the largest and most complete assortment in America. Hill's Quality Evergreens are the acknowledged standard, and our long experience has taught us how to grow, dig and pack them, as well as ship to all parts of the world with safety.

LOOKING AHEAD.

Many people do not realize their need of Trees, Shrubs, etc., until after the Spring season for transplanting has passed. The loss of a year's growth means much, but this can be overcome by taking advantage of Fall Planting. The judicious and tasteful planting of Trees and Shrubs enhances the value of real estate more than an equal amount of money invested in any other way. FALL PLANTING OF EVERGREENS is now considered as advantageous or even more so than Spring planting for the reason that during Fall they make new root growth and become firmly established before Spring.

D. HILL SAYS:

"To obtain these beautiful effects with Evergreens does not necessitate any great outlay of money, nor does it require any special knowledge of horticulture. Trees of any size to suit the pocketbook, either

small, medium or large, can be selected, and the only requisite for success is that they be planted carefully in good, rich soil, and simply given reasonable attention, same as the rose garden or vegetable patch. Permanency and beauty are two attributes attained by Evergreens, not to be found in the flower family, which thrive and bloom for a few weeks and then are gone forever. A small initial investment in Evergreens will prove a source of enjoyment for a lifetime, and the trees grow more beautiful each year."

SHIPPING.

Shipping time for Evergreens commences about Aug. 20th, and continues through the Fall and Winter until ground freezes too hard to dig. Deciduous Trees and Shrubs can be shipped after the frost has taken off leaves and hardened up their wood, generally after October 15th.

D. HILL NURSERY CO.

EVERGREEN SPECIALISTS
DUNDEE, ILLINOIS



HILL'S SPECIMEN ORNAMENTAL EVERGREENS *Balled and Burlapped*



Balled and Burlapped

To satisfy the increasing demand for larger trees to give quicker results, a large department of our nursery is devoted to the growing of Specimen Ornamental Evergreens and to insure certain results these larger sized trees are handled with Ball and Burlap—(see illustration). This stock is all grown in wide rows with plenty of room to develop both root and top. Each tree is staked to insure symmetrical growth and at regular intervals, throughout the growing season, trimming and pruning is done by men of long experience and special training in this line. We keep these trees on the move—transplanting them every two years as a root system can be developed in no other way—and in Evergreen's, roots are the basis of success in transplanting. A specimen tree from Hill's is a specimen. We have the facilities, the men and the experience to grow and handle them right. Starting with August 20th, Evergreens can be handled successfully throughout the fall months until the ground freezes too hard to dig.

		Size	Each	10
FIRS				
Balsam Fir	B&B	3-4 ft.	\$2.50	\$22.50
Balsam Fir	B&B	4-5 ft.	3.00	25.00
Balsam Fir	B&B	5-6 ft.	3.50	30.00
Balsam Fir	B&B	6-7 ft.	4.50	37.50
Hemlock (Sheared Specimens)	B&B	2-3 ft.	2.75	24.50
Hemlock (Sheared Specimens)	B&B	3-4 ft.	3.25	30.00
Hemlock (Sheared Specimens)	B&B	4-5 ft.	4.75	45.00
Hemlock (Sheared Specimens)	B&B	5-6 ft.	6.00	50.00
Hemlock (Sheared Specimens)	B&B	6-7 ft.	7.50	67.50
Hemlock (Sheared Specimens)	B&B	7-8 ft.	9.00	80.00
Concolor Fir	B&B	1½-2 ft.	2.50	22.50
Concolor Fir	B&B	2-2½ ft.	3.25	30.00
Veitchii Japanese Fir	B&B	2½-3 ft.	1.50	10.00
Veitchii Japanese Fir	B&B	3-4 ft.	1.75	15.00
Veitchii Japanese Fir	B&B	4-5 ft.	2.25	18.50
JUNIPERS				
White Tipped Juniper	B&B	2-2½ ft.	1.50	12.50
White Tipped Juniper	B&B	3-4 ft.	2.25	15.00
Juniperus Compacta	B&B	2x2 ft.	3.00	27.50
Lee's Elegants Juniper	B&B	2½-3 ft.	3.00	24.50
Lee's Elegants Juniper	B&B	3-4 ft.	4.00	35.00
Juniper Glauca (Silver Cedar)	B&B	3-4 ft.	4.50	40.00
Juniper Glauca (Silver Cedar)	B&B	4-5 ft.	6.00	50.00
Golden Japanese Juniper	B&B	2-3 ft.	1.50	12.50
Pfitzeriana Juniper	B&B	2-2½ ft.	2.25	20.00
Pfitzeriana Juniper	B&B	2½-3 ft.	2.75	22.50
Japanese Trailing Juniper	B&B	1½-2 ft.	3.75	30.00
Sabina Juniper	B&B	2-2½ ft.	3.00	25.00
Sabina Juniper	B&B	2½-3 ft.	4.00	32.50
Schottii Juniper	B&B	3-4 ft.	4.50	40.00
Juniper Sinensis	B&B	3-4 ft.	3.50	30.00
Juniper Sinensis	B&B	4-5 ft.	4.50	40.00
Red Cedar	B&B	2-3 ft.	2.25	17.50
Red Cedar	B&B	3-4 ft.	3.25	27.50

5 at 10 rate

B&B signifies "Ball and Burlap"

SPRUCES		Size	Each	10
White Spruce	B&B	3-4 ft.	3.00	25.00
White Spruce	B&B	4-5 ft.	3.50	30.00
White Spruce	B&B	5-6 ft.	4.50	40.00
Black Hill Spruce	B&B	3-4 ft.	4.25	37.50
Black Hill Spruce	B&B	4-5 ft.	5.00	45.00
Englemann Spruce	B&B	2½-3 ft.	2.75	22.50
Englemann Spruce	B&B	3-4 ft.	4.00	37.50
Norway Spruce	B&B	4-5 ft.	4.00	35.00
Norway Spruce	B&B	5-6 ft.	4.75	40.00
Norway Spruce	B&B	6-7 ft.	5.50	47.50
Norway Spruce	B&B	7-8 ft.	7.50	67.50
Weeping Norway Spruce	B&B	2-3 ft.	2.25	15.00
Weeping Norway Spruce	B&B	3-4 ft.	3.00	20.00
Weeping Norway Spruce	B&B	4-5 ft.	3.50	25.00
Pyramidal Norway Spruce	B&B	2-3 ft.	1.50	12.50
Pyramidal Norway Spruce	B&B	3-4 ft.	2.50	20.00
Pyramidal Norway Spruce	B&B	4-5 ft.	3.00	25.00
Grafted Colo. Blue Spruce (Selects)	B&B	2-2½ ft.	3.75	30.00
Grafted Colo. Blue Spruce (Selects)	B&B	2½-3 ft.	4.50	40.00
Grafted Colo. Blue Spruce (Selects)	B&B	3-4 ft.	6.00	57.50
Grafted Colo. Blue Spruce (Selects)	B&B	4-5 ft.	8.50	80.00
Colo. Blue Spruce (Selects)	B&B	2-2½ ft.	2.50	22.50
Colo. Blue Spruce (Green)	B&B	2-2½ ft.	2.25	20.00
Weeping Blue Spruce	B&B	3-4 ft.	4.50	40.00
Weeping Blue Spruce	B&B	4-5 ft.	5.50	50.00

PINES		Size	Each	10
Swiss Stone Pine	B&B	2-3 ft.	3.00	25.00
Swiss Stone Pine	B&B	3-4 ft.	4.50	40.00
Swiss Stone Pine	B&B	4-5 ft.	6.00	50.00
Dwarf Mugho Pine	B&B	1-1½ ft.	1.85	12.00
Dwarf Mugho Pine	B&B	1½-2 ft.	2.25	20.00
Dwarf Mugho Pine	B&B	2-3 ft.	3.50	30.00
Dwarf Mugho Pine	B&B	3-4 ft.	6.50	50.00
Ponderosa Pine	B&B	3-4 ft.	2.50	20.00
White Pine	B&B	3-4 ft.	2.00	17.50
White Pine	B&B	4-5 ft.	3.00	25.00
White Pine	B&B	5-6 ft.	3.75	32.50
White Pine	B&B	6-7 ft.	5.00	40.00
White Pine	B&B	7-8 ft.	7.00	60.00
White Pine (Extra Select)	B&B	8-9 ft.	8.00	75.00
White Pine (Extra Select)	B&B	9-10 ft.	9.50	90.00
White Pine (Extra Select)	B&B	10-12 ft.	15.00	140.00
White Pine (Extra Select)	B&B	12-15 ft.	25.00	200.00

YEWS AND ARBOR VITAE

Japanese Dwarf Yew	B&B	1½-2 ft.	\$3.00	\$25.00
American Yew	B&B	1-1½ ft.	1.85	15.00
American Arbor Vitae	B&B	3-4 ft.	2.50	18.50
American Arbor Vitae	B&B	4-5 ft.	3.25	25.00
Douglas Pyramidal Arbor Vitae	B&B	3-4 ft.	4.75	45.00
Douglas Pyramidal Arbor Vitae	B&B	4-5 ft.	5.50	48.50
Globosa Arbor Vitae	B&B	15x15 in.	2.75	24.50
Peabody's Golden Arbor Vitae	B&B	3-4 ft.	3.50	30.00
Peabody's Golden Arbor Vitae	B&B	4-5 ft.	4.50	40.00
Pyramidal Arbor Vitae	B&B	4-5 ft.	3.75	35.00
Pyramidal Arbor Vitae	B&B	5-6 ft.	5.00	45.00
Siberian Arbor Vitae	B&B	2-2½ ft.	2.50	20.00
Woodward Globe Arbor Vitae	B&B	2x2 ft.	3.50	30.00

5 at 10 rate B&B signifies "Ball and Burlap"

20 acre block of various Junipers, Hemlocks, Pines etc.

Note the space between each tree and the distance between rows. No crowding here—each tree has plenty of room to develop both root and top.



D.H.N. CO.

HILL'S EVERGREEN SEEDLINGS

All Hardy Sorts, Strong, Thrifty and Well-Rooted. Will be Graded and Tied in Bunches of 50 and 100. 50 at 100 Rate, 500 at 1000 Rate. Write for Special Prices on Larger Quantities.



We have specialized in the growing of Evergreen Seedlings for over half a century and have the largest and most complete stock in America. We have every facility for growing Evergreens from seed—plus the finest natural location in the United States—plus over fifty years' practical knowledge of how to do it best. We are growing millions annually. We go to a great deal of expense gathering and sowing our seed, but we think it's worth it all to know that the little trees are true to name, and healthy and vigorous. (See illustration).



	Size	Age	100	1000
Concolor Fir	2- 5 in.	2 yr.	\$1.85	\$12.00
Concolor Fir	4-10 in.	3 yr.	2.50	18.00
Douglas Fir	2- 5 in.	2 yr.	1.50	6.00
European Larch	3-10 in.	2 yr.	1.50	8.00
European Larch	12-24 in.	3 yr.	2.00	10.00
White Spruce	3-10 in.	3 yr.	2.25	12.00
Englemann Spruce	2- 6 in.	3 yr.	3.00	12.00
Norway Spruce	2- 5 in.	2 yr.	1.25	3.50
Norway Spruce	4- 8 in.	3 yr.	1.50	5.00
Norway Spruce	6-10 in.	4 yr.	2.00	6.00
Colorado Blue Spruce	2- 4 in.	2 yr.	2.00	7.50
Austrian Pine	3- 6 in.	2 yr.	1.50	6.00
Austrian Pine	4- 8 in.	3 yr.	1.75	7.50
Austrian Pine	6-12 in.	4 yr.	2.00	10.00
Jack Pine	2- 6 in.	2 yr.	1.50	4.00
Jack Pine	8-20 in.	2 yr.	2.00	7.50
Jack Pine	2- 3 ft.	3 yr.	2.50	15.00
Flexilis Pine	3- 6 in.	3 yr.	1.50	6.00
Dwarf Mugho Pine	2- 4 in.	2 yr.	1.50	7.50
Ponderosa Pine	3- 6 in.	2 yr.	1.50	5.00
Ponderosa Pine	4-10 in.	3 yr.	2.25	7.50
Norway Pine	2- 4 in.	2 yr.	1.50	6.00
Pitch Pine	4-12 in.	2 yr.	1.85	7.50
White Pine	2- 5 in.	2 yr.	1.50	6.00
Scotch Pine	3- 6 in.	2 yr.	1.50	5.00
Scotch Pine	6-12 in.	3 yr.	1.85	8.00
Scotch Pine	10-20 in.	4 yr.	3.00	10.00
American Arbor Vitae	3- 6 in.	3 yr.	1.50	10.00
Chinese Arbor Vitae	3- 6 in.	2 yr.	1.50	5.00

HILL'S FOREST TREE SEEDLINGS

All Strong, Well Graded Stock. Delivery After Leaves Have Dropped Off and Growth Hardened Up—Usually After October 15th.

	Age	Size	100	1000
Hard or Sugar Maple	1 yr.	4- 8 in.	\$1.50	\$ 7.50
Hard or Sugar Maple	2 yr.	6-15 in.	1.85	12.00
White Ash	2 yr.	6-18 in.	1.50	6.00
Wild Black Cherry	1 yr.	4-10 in.	1.50	10.00
White Oak	1 yr.	4- 8 in.	1.50	9.00
Scarlet Oak	1 yr.	4- 8 in.	3.00	20.00
Black Locust	1 yr.	18-24 in.	1.50	6.00
Black Locust	1 yr.	2- 3 ft.	2.00	7.50
American Linden	1 yr.	6-12 in.	1.50	12.00
American White Elm	2 yr.	12-24 in.	1.85	6.00
American White Elm	2 yr.	2- 3 ft.	2.25	8.00

(Straight-Growing Northern Variety)

50 at 100 rate, 500 at 1000 rate



HILL'S DECIDUOUS SHADE TREES

	Diam.	Size	Each	10	100
Norway Maple	2½-3 in.	12-14 ft.	\$3.75	\$32.50	\$
Norway Maple	3 -4 in.	14-16 ft.	4.50	40.00	
Purple Maple	2 -2½ in.	10-12 ft.	4.50	40.00	
White Birch		4- 5 ft.	.20	1.50	10.00
Thorn		4- 6 ft.	1.20	10.00	
Thorn		8-10 ft.	2.50	20.00	
Purple Beech	1½-2 in.	10-12 ft.	3.00	22.50	
Magnolia Acuminata		3- 4 ft.	.50	3.75	30.00
Burr Oak		3- 4 ft.	.30	1.50	12.00
Burr Oak		4- 5 ft.	.40	2.25	15.00
Golden Willow		3- 4 ft.	.15	1.00	6.00
Golden Willow		4- 6 ft.	.20	1.50	7.50
Golden Willow		6- 8 ft.	.30	2.25	15.00
European Mountain Ash		4- 6 ft.	.30	2.25	12.00
Oak Leaf Mountain Ash		4- 6 ft.	.45	2.25	18.00
American Linden	3 -4 in.		5.00	45.00	
American Linden	4 -5 in.		6.00	50.00	
European Linden		6- 8 ft.	.30	2.25	15.00
American White Elm		4- 6 ft.	.30	2.25	6.00
American White Elm		6- 8 ft.	.50	3.00	20.00
American White Elm	2 -2½ in.	10-12 ft.	2.25	18.00	
American White Elm	2½-3 in.	12-14 ft.	2.75	22.50	
American White Elm	3 -4 in.	12-14 ft.	3.25	30.00	

5 at 10 rate, 50 at 100 rate

NOTE:-Please note special low price on Norway Maple and American White Elm.
These are the two best sorts for street planting Stock is extra choice.

D. HILL NURSERY CO.

EVERGREEN SPECIALISTS

LARGEST GROWERS IN AMERICA

DUNDEE, ILL.

Special Notice:

This list is intentionally abbreviated, as it is intended as a supplement to Hill's Evergreen Book which contains complete descriptions and illustrations of each variety.

Terms are cash. Prices include boxing and delivery on cars Dundee.

Kindly send all orders, money and correspondence plainly addressed to

THE D. HILL NURSERY CO.
DUNDEE, ILL.



In this section are shown young Evergreen transplants of Douglas Fir in foreground. Norway Spruce to the left and to the extreme right American Arbor Vitae.

HILL'S EVERGREEN TRANSPLANTS

Small and Medium Sized Trees for Windbreaks, Hedges, Etc.



Hill's transplants are unsurpassed for quality. In most cases they are twice transplanted and once root-pruned—insuring a mass of strong, fibrous roots (see illustration). Root-pruning and transplanting are the only known methods of producing a tree that has masses of fibrous feeding roots, and without such roots a tree will not grow when shipped to you. Years ago we experimented and discovered the Hill scientific method of growing Evergreens, and today no other means are employed on our place. This accounts for the high quality of Hill's Evergreens. This is the secret of Hill's Evergreens—certainty of growth.



	Size	Each	10	100
Ba'sam Fir	12-18 in.	\$.25	\$1.50	\$ 9.00
Balsam Fir	18-24 in.	.30	2.25	12.00
Hemlock	6-10 in.	.20	1.50	12.00
Hemlock	10-15 in.	.30	2.25	20.00
Concolor Fir	4-10 in.	.20	1.50	7.50
Douglas Fir	6-12 in.	.15	1.20	5.00
Douglas Fir	10-18 in.	.30	2.25	15.00
Douglas Fir	18-24 in.	.75	4.50	30.00
White Spruce	6-15 in.	.25	1.50	10.00
White Spruce	18-24 in.	.35	2.50	18.00
Black Hill Spruce	12-18 in.	.30	2.25	13.50
Black Hill Spruce	18-24 in.	.45	3.75	22.50
Norway Spruce	10-18 in.	.20	1.50	6.00
Norway Spruce	18-24 in.	.30	2.25	12.00
Norway Spruce	2- 3 ft.	.45	3.00	20.00
Black Spruce	2- 3 ft.	.15	1.25	7.50
Colorado Blue Spruce	6-10 in.	.25	1.85	15.00
Austrian Pine	6-12 in.	.25	1.85	9.00
Jack Pine	6-12 in.	.20	1.50	7.50
Flexilis Pine	8-18 in.	.30	2.25	15.00
Dwarf Mugho Pine	6-10 in.	.35	2.50	18.00
Ponderosa Pine	12-18 in.	.25	1.75	10.00
White Pine	3- 6-in.			3.00
White Pine	8-18 in.	.30	2.00	10.00
White Pine	18-24 in.	.40	3.00	20.00
Scotch Pine	8-15 in.	.25	1.50	7.50
American Yew	6-12 in.	.35	2.50	10.00
Japanese Dwarf Yew	6-12 in.	.35	3.00	25.00
American Arbor Vitae	12-18 in.	.25	1.75	9.00
American Arbor Vitae	18-24 in.	.35	2.25	13.50

5 at 10 rate, 50 at 100 rate

H

A Word of Appreciation

We wish here to express sincere thanks to our many friends and patrons, who have written kind words relative to the quality of stock and treatment they have received from us the past season. We greatly appreciate these expressions of confidence and shall endeavor to maintain the reputation they have so kindly given us.

Hill Quality

The name of D. Hill, has come to be synonymous with "High Quality" in Evergreens. Over half a century of conscientious effort, unbounded enthusiasm, a close study of the value of every new specie introduced; and above all an ambition to make new friends and keep the old, has been the method by which this high position has been reached.

Your Success With Our Stock

is a matter in which we are mightily interested. Therefore we endeavor to do everything reasonable within our power to help you succeed with the stock we send you, because we love trees and want you to enjoy them also. **No firm is more careful in filling orders:** we use every reasonable means to learn the customers' wishes without delaying the shipment. Your interests are our interests, and we present you this 1913 catalog, confident that we merit your trade, and assure you of the best treatment, whether the order is large or small.

BEAUTIFUL GRAFTED BLUE SPRUCE Special Offer No. 100

This tree stands supreme in the majestic beauty of its foliage, form and color. This special offer is made because we want you to know this wonderful tree as we do — the most ornamental tree in existence. It excites the wonder and admiration of all. The bright gorgeous silvery blue tints, when flashed in the sunlight, afford a wonderful aspect. It grows to perfection in all parts of the country, and is absolutely hardy. Thousands took advantage of this wonderful offer last season and many expressed great surprise at the magnificence of the tree. This appreciation leads us to again feature this special offer this season. The illustration shows the tree dug with ball of earth and burlapped ready to box and ship to you.

Hardy, long-lived.

Sure to grow.

Rich gorgeous foliage.

1 Grafted Blue Spruce
1 to 1½ ft. B. & B.

\$1.25



The Beautiful Grafted Blue Spruce



NORWAY SPRUCE

NORWAY SPRUCE
WINDBREAK

JUNIPER

CONCOLOR FIR

WHITE SPRUCE

BLACK HILL SPRUCE



DOUGLAS FIR



AMERICAN ARBOR VITAE



BLUE SPRUCE

HILL'S NATIONAL COLLECTION

SIX HARDY EVERGREENS FOR 95c. HERE ARE REPRODUCED IN NATURAL COLORS 6 OF HILL'S MOST VALUABLE, HARDY EVERGREENS. ALL ARE LARGE VIGOROUS, TRANSPLANTED 4 YEAR OLD TREES—READY TO GIVE IMMEDIATE EFFECT. SAFE ARRIVAL GUARANTEED TO ANY POINT IN THE U. S. PLEASE ORDER AS "HILL'S NATIONAL COLLECTION."



WHITE PINE



NORWAY SPRUCE



HEMLOCK